

WEATHER

	Min.	Max.	Precip.
Monday, Dec. 9	6	20	0.01
Tuesday, Dec. 10	12	38	0.00
Wednesday, Dec. 11	23	40	0.01
Thursday, Dec. 12	5	29	Trace
Friday, Dec. 13	6	29	Trace
Saturday, Dec. 14	7	28	0.00
Sunday, Dec. 15	22	40	0.00

The Chelsea Standard

QUOTE

"The more you speak of yourself, the more likely you are to lie."
—Zimmerman.

ONE HUNDRED-SEVENTH YEAR—No. 27

14 Pages This Week

Plus 4-Page Supplement

CHELSEA, MICHIGAN, THURSDAY, DECEMBER 16, 1976

15c per copy

SUBSCRIPTION: \$6.00 PER YEAR

Poor Shooting Costs Cagers Two Losses

Chelsea High's varsity basketball team scrambled through two close games last week-end, and lost both by an eight-point gap. Characterizing both defeats as the result of poor shooting, Coach Don Balistrere added, "It's been a major problem all along this season, we just can't seem to put the ball in the hole."

The Bulldogs cagers lost to Novi Friday, 41-49, successfully sinking only 23 percent of their attempts in the basket. Scoring for Chelsea were Don Morrison, 10 points; Andy Harris and Randy Sweeney, each; Dean Thompson and Rod Sweeney, 6 each; and Tony Robards.

In the game, several players performed well according to Balistrere. "Thompson played good defense and held one of Novi's best league scorers to only four points," he stated, "while Harris played his first game as a varsity starter did a good job."

"Rod Sweeney did a good job on the boards, and Morrison played a fine, steady game," the coach added.

Leading rebounders were Robards and Randy Sweeney, who collected 11 each.

On Saturday, Chelsea lost to Brighton, 61-69, after dropping a 58-57 lead with only 1½ minutes to go in the game. "We scored the leading bucket, but it was no good because of steps," Coach Balistrere said, "and on the foul, Brighton went ahead to hold the lead and won."

Throughout the game, Chelsea played well against league leading Brighton with a solid defensive pattern and an offense which picked up to net a 35 percent scoring average.

Leading scorers for Chelsea were Randy Sweeney with 18, Don Morrison, 16; Randy Harris, 9; Jerry Benjamin and Dean Thompson, 6 each; Rod Sweeney, 4; and Tony Robards, 2. Randy Sweeney headed up the rebounding action with 10.

Cited for outstanding play against Brighton by Coach Balistrere was Bulldog Don Morrison, who sustained a neck injury in the last five seconds of the contest.

With their early season record at a disappointing 0-4, the varsity cagers expect to reverse the momentum when they play South Lyon at home on Friday, Dec. 17.

Injuries Hit Basketball Team Starters

Good shooting has plagued Chelsea High's varsity cagers since early December when they opened their season against Jackson Northwest. But, adding to their unimpressive performance in the past few weeks has been an unexpected rash of injuries which have sidelined several starters in questionable status as performers.

Both team co-captains, Pete Feeney and Don Morrison, are temporarily out of action according to Coach Tom Balistrere. Feeney was injured with a severe ankle sprain which occurred in practice recently, while Morrison sustained a wrist injury during the remaining seconds of play against Brighton last Saturday.

Morrison's mishap occurred when he ran into a player while battling down the court. To correct the injury, he is currently wearing a supportive collar around his neck.

Both Randy Sweeney and Jerry Benjamin have been missing games. Sweeney reportedly because of a neck injury, and Benjamin because of a troublesome twisted knee.

Dean Thompson, last of the injured players, is handicapped with a dislocated elbow. Thompson's injury occurred during Chelsea's game with Brighton last week-end.



BOOSTERS CLUB OFFICERS: In their redefined role of a support group for athletics in Chelsea schools, the Chelsea Athletic Boosters Club, Inc., met for their second in a series of organizational meetings at the home of Mr. and Mrs. Roger Schrotenboer last Monday, Dec. 13. Presiding over the meeting were the recently elected officers and board members pictured above. Front row, from left are board member Vi Morrison, secretary Sally Proctor, and board member Sallie Springer. Back row, from left are board member Dale Fisher, board member Fred Schwarze, vice-president Roger Schrotenboer, president Hal Pennington, board member Dr. Wilfred Lane, and board member Phil Bareis. Not present for the photo was treasurer Gail Bauer.

LithoCrafters May Expand in Old Dana Plant

Already action is underway to develop a newly-classified industrial rehabilitation district in the Chelsea area. Following the creation of the new district in a motion passed by Chelsea Village Council Tuesday, Dec. 7, LithoCrafters, Inc., of Ann Arbor, announced plans Thursday, Dec. 9, to expand its book publishing operations to the 6½-acre vacant Dana Corp. plant site.

According to the Village Council resolution, any new occupant of the former Dana plant site would be eligible for property tax breaks on all new construction.

While it is also assumed LithoCrafters' expansion of its 210-employee firm would create new jobs in the area, no exact figure of

available job openings was confirmed.

Under Michigan's Public Act 193 of 1974, any business which chooses to rehabilitate abandoned plant space and create new jobs in approved districts, may continue to pay property taxes based on pre-improvement value for 12 years.

The Chelsea Village Council action to create the new industrial development district currently eyed by LithoCrafters, Inc., still requires State Tax Commission approval.

The council's latest move succeeds a motion passed by council members in November which declared part of the Chelsea Milling Co. plant site as eligible for property tax relief on new baking mix facilities planned by that firm.

Anti-Smoking Clinic Starts

What began as a grass-roots request by Chelsea High school students interested in curbing the smoking habits of their peers, developed into Chelsea's first Anti-Smoking Clinic held at the high school Wednesday, Dec. 15.

According to volunteer clinic coordinator, Charles Cox, "the greatest increase in smoking is among high school aged females." While reasons precipitating the increase are unclear, Chelsea students are interested in reversing the direction of such statistics locally.

Chelsea's anti-smoking clinic primarily focuses on high school students, but anyone who smokes is welcome, Cox stated. The effort is receiving full support from local chapters of the Washtenaw County Cancer Society.

Wednesday's meeting was held to organize the clinic program. At that time, those attending selected the direction and depth of the program they planned to pursue, and modified their planning according to the number of participants.

"We anticipate full mobilization of the program after the holidays," Cox explained. "We will be exploring the relationship of cancer to smoking, and 'I quit' reinforcement programs. Ideally, we will be meeting two to four hours per week, with a minimum of one clinic period per week."

Cox was contacted to co-ordinate the clinic by Chelsea Cancer Society co-chairman Marge Daniels. The Cancer Society had been approached with the novel idea by Nancy Shave, acting assistant principal of Chelsea High. Miss Shave acted on behalf of students who had expressed a desire for a school-sponsored anti-smoking clinic.

Cox is a dental professor at the University of Michigan, currently involved in cancer research. He resides on Sycamore St.

What began as a grass-roots request by Chelsea High school students interested in curbing the smoking habits of their peers, developed into Chelsea's first Anti-Smoking Clinic held at the high school Wednesday, Dec. 15.

According to volunteer clinic coordinator, Charles Cox, "the greatest increase in smoking is among high school aged females." While reasons precipitating the increase are unclear, Chelsea students are interested in reversing the direction of such statistics locally.

Chelsea's anti-smoking clinic primarily focuses on high school students, but anyone who smokes is welcome, Cox stated. The effort is receiving full support from local chapters of the Washtenaw County Cancer Society.

Wednesday's meeting was held to organize the clinic program. At that time, those attending selected the direction and depth of the program they planned to pursue, and modified their planning according to the number of participants.

"We anticipate full mobilization of the program after the holidays," Cox explained. "We will be exploring the relationship of cancer to smoking, and 'I quit' reinforcement programs. Ideally, we will be meeting two to four hours per week, with a minimum of one clinic period per week."

Cox was contacted to co-ordinate the clinic by Chelsea Cancer Society co-chairman Marge Daniels. The Cancer Society had been approached with the novel idea by Nancy Shave, acting assistant principal of Chelsea High. Miss Shave acted on behalf of students who had expressed a desire for a school-sponsored anti-smoking clinic.

Cox is a dental professor at the University of Michigan, currently involved in cancer research. He resides on Sycamore St.

CHS Novice Debaters Lose In State Meet

Chelsea High novice debaters competed in the Novice State Qualifying Championship Tournament in Grand Ledge last Saturday, Dec. 11, but fell wide of the required 6-2 finishing score needed to qualify for the state championships. Instead, the Bulldogs closed the day with an unremarkable 3-5 record.

"I'm naturally disappointed we didn't win a place in the state tournament, but I'm nevertheless proud of the high degree of competence the novices displayed while debating; they showed they can compete well with any size school," Chelsea High debate coach William Coelius said following the tournament.

Some 70 high schools throughout Michigan participated in Saturday's eight-round verbal contest. Arguing the affirmative for Chelsea were Bev Simon and Tim Stubbs, while on the negative side were Andy Anderson and Caroline Meyer.

The CHS novices defeated Grand Rapids Christian, Dearborn, and Fenton, but lost to Jackson Parkside, Livonia Stevenson, Kalamazoo, and Tecumseh.

"We expect a fairly tough tournament, as it was last year," said meet director Pat Clarke in anticipation of the event. Tournament finals will begin promptly at 6:30 p.m. Saturday.

In profiling Saturday's contenders, New Boston appears heavily favored for the number one spot. The team easily won the New Bos-

Blood Bank Clinic Scheduled Saturday

Only two days remain before the Chelsea Jaycee Blood-Drive gets underway this Saturday, Dec. 18. Persons who give blood will receive cards attesting to the amount given and to their individual blood type. All blood donors are privileged to receive free blood should they fall victim to an accident requiring blood transfusions.

For information or an appointment to give blood, call Dave Monroe, 475-7130, or Al Sheffield, 475-2081.

donors must be no younger than 18 years, no older than 65, and all must be in good health.

Wrestling Tourney Has 8 Strong Teams

The second Chelsea Wrestling Invitational is slated for this week-end at Chelsea High school. Beginning with preliminary rounds at 11:30 a.m. Saturday, Dec. 18, eight regional teams will square off for title honors. In addition to host Chelsea, competing in this year's tournament will be Albion, Belleville, Howell, New Boston Huron, Southgate Aquinas, Lake Fenton, and Tecumseh.

"We expect a fairly tough tournament, as it was last year," said meet director Pat Clarke in anticipation of the event. Tournament finals will begin promptly at 6:30 p.m. Saturday.

In profiling Saturday's contenders, New Boston appears heavily favored for the number one spot. The team easily won the New Bos-

ton Invitational last week-end, defeating Saline which is expected to take the SEC league title. Saline placed third in last Saturday's contest.

Belleville will be entering the Chelsea Invitational with a fairly decent wrestling tradition, as will Lake Fenton, runners-up in the event last year.

Southgate Aquinas has been cited as a perennial Class "B" power, and is particularly strong this year. Another strong team, Tecumseh, defeated Chelsea grapplers Tuesday, outscoring the Bulldogs 19-42. Tecumseh boasts an all-se-nior team.

Tickets for preliminary rounds in the invitational are \$1.25 for adults and 75 cents for students, and those for the evening finals are \$2 for adults and \$1 for students.

JV Cagers Rally for Win Over Pinckney

After trailing by 12 points at the end of the first quarter, Chelsea High's JV basketball team recorded a striking comeback as they blazed past Pinckney Tuesday, Dec. 14, on the way to a 54-50 victory.

"We came back really well after being 7-19 at the end of the first quarter," said Coach Paul Terpstra after the game.

Leading scorer for Chelsea was Gary Dis with 16 points. Also scoring were Charlie Bridges, Matt Feeney, and Jesse Coburn, 8 each. In rebounding action, Don Schrotenboer led with 11, while Bridges was close behind with 9.

With Tuesday's win, the JV record now stands at 2-3. The cagers are scheduled to begin their match against South Lyon Friday, Dec. 17, 6:30 p.m. in the CHS gymnasium.

Swim Pool Open During Holiday Week

Larry Reed, pool director, has announced the Beach School indoor swimming pool will be open on Monday, Dec. 20, Thursday, Dec. 23, and Monday, Dec. 27 through Thursday, Dec. 30 at 7 p.m. for open recreational swimming over (Continued on page six)



CLUSTERED AROUND a bespectacled Santa, several Chelsea children who participated in the annual Chelsea Kiwanis Club Christmas Party Monday evening, Dec. 13. Lucky recipient of Santa's embrace is Tracy Carruthers, daughter of James

Carruthers, the beardless fellow kneeling in the center of the photo. Santa's new dark-rimmed glasses just may set a fashion trend for the coming year.

Boys Swim Team Sinks Ecorse, 104-50

Chelsea High's boys varsity swimming team won their second consecutive meet this week as they defeated Ecorse, 104-52.

Winners for Chelsea were Dave Steinbach, Jim Dowhall, John Daniels and John Osterle, medley relay; Jeff Rudd, 200 free; John Daniels, 100 fly and 200 1.M.; Steve Dresch, 50 free; Larry Hafner, diving; Dave Steinbach, 100 free; Scott Prohaska, 500 free; and Henri Vanderwaard, backstroke.

Chelsea also dominated the last event, the 400 freestyle relay. The Bulldog team was composed of Steve Dresch, Jeff Rudd, John Osterle and Henri Vanderwaard.

School records were broken by Jeff Rudd in the 200 and 100 free styles; Steve Dresch in the 50 free; John Daniels in the 200 1.M.; and Larry Hafner in diving.

The swimmers will have their next meet at home Thursday, Nov. 16, 7 p.m., against Inkster.

Holiday Band Concert Scheduled for Tonight

Some 220 members of the 7th, 8th, and 9th grade Chelsea school bands, along with the CHS Symphony Band, will present "Sounds of Christmas," a holiday concert Thursday (today), Dec. 16, beginning 7:30 p.m. in the Chelsea High school auditorium.

Directing and conducting the program will be Steve Bergmann, 7th grade and high school band director, and Warren Mayer, 8th and 9th grade band director. The duo will be assisted by Mary Ann Opp Chelsea schools student band teacher. (Continued on page three)



PERCHED ON SANTA'S AMPLE LAP at Longworth Plating Co. last Saturday, Dec. 11, are Kristen Roberts (left knee) and Michael Loftis (right knee). The youngsters were part of a day-long stream of children who came to visit Santa at his

Main St. greeting room and discuss their Christmas gift requests. Santa's guest appearance was sponsored by the Chelsea Jaycees. Kristen and Michael are the children of Gerald Roberts and Mrs. Linda Loftis.

Established 1871
The Chelsea Standard Telephone 475-1371
 Excellence Award By Michigan Press Association
 1951-1952-1960-1964-1965-1966
 Walter P. Leonard, Editor and Publisher



Published every Thursday morning at 300 North Main Street, Chelsea, Mich. 48118, and second class postage paid at Chelsea, Mich., under the Act of March 3, 1879.

Subscription Rates (Payable in Advance)
 In Michigan: Outside Michigan:
 One Year\$6.00 One Year\$8.50
 Six Months\$3.50 Six Months\$4.50
 Single Copies\$.20 Single Copies\$.25

MEMBER National Advertising Representative
NATIONAL NEWSPAPER MICHIGAN NEWSPAPERS, INC.
 Association - Founded 1885 257 Michigan Ave.
 East Lansing, Mich. 48823

Uncle Lew from Lima Says:

DEAR MISTER EDITOR:

I see that all the column writers have turned into fortune tellers. They are looking into their crystal balls and seeing all the changes in Washington. I got the idea a heap of people are going and coming with the new Administration, but beyond that I figure my guess is as good as anybody else's. I don't look for Mr. Carter to ride to his inauguration in a bubbletop pickup, but on the other hand I ain't so sure it ain't about time we got away from some of our high class airs.

For instant, here, we will be

Lima Names 3 to Board Of Review

On Monday, Dec. 13, Lima Township Board conducted its regular monthly meeting with 14 residents in attendance.

The board authorized payment of \$4,500 on account out of federal revenue sharing funds to the Washtenaw County Road Commission for road maintenance charges.

Following a discussion on the local open space easement agreement, the board decided to hold an open meeting at a later date to clarify the conditions of the act before the general public.

The township was authorized to proceed with the purchase of two filling cabinets.

Supervisor-elect Robert Musolf was appointed delegate to the Michigan Township Association, and appointed to membership on the Lima Township Planning Commission.

Prior to adjournment of the meeting, three new members were selected to represent township residents on the 1977-78 Board of Review. The new members are Betty Nessman, Harold Trinkle and Marvin Schiller.

Campus life at Michigan State University is represented with several large photographs in the special American exhibit on display in the U.S.S.R. The Moscow exhibit, which is attracting huge crowds, includes several life-size photos depicting MSU research and student life.

Howell Livestock Auction

Starts 1 p.m. Every Monday
 Mason 676-5400
 The Wise Owl Says Ship to Howell
 Phone 546-2470. Bim Franklin
 Market Report for Dec. 13

CATTLE—
 Bulk Gd.-Choice Steers, \$40 to \$41
 Few High Choice Steers, \$41 to \$41.50
 Gd.-Choice Heifers, \$35 to \$39
 Fed Heifers, \$28 to \$34
 Ut.-Std., \$29 and down.
COWS—
 Heifer Cows, \$26 to \$28
 Ut.-Commercial, \$22 to \$26
 Canner-Cutter, \$12 to \$22
 Fat Beef Cows, \$20 to \$22
BULLS—
 Heavy Bologna, \$24 to \$28
 Light and Common, \$23 and down.
FEEDERS—
 400-600 lb., Good-Choice Steers, \$34 to \$40
 600-800 lb., Good-Choice Steers, \$30 to \$36
 300-400 lb., Good-Choice Heifers, \$22 to \$28
 300-500 lb., Heifer Steers, \$20 to \$24
 500-600 lb., Heifer Steers, \$22 to \$26
 Comm'n & Medium, \$20 and down.
ALVES—
 Prime, \$50 to \$61
 Good-Choice, \$40 to \$50
 Heavy Heifers, \$30 to \$40
 Cull & Med., \$16 to \$25
 Culler going back to farms sold up to \$30
SHEEP—
 Shorn Slaughter Lamb:
 Choice-Prime, Good-Utility,
 Weaned Slaughter Lamb, Spring:
 Choice-Prime, \$40 to \$44
 Good-Utility, \$32 to \$40
 Slaughter Lamb, \$38 to \$44
 Feeder Lamb, All Weights, \$42 to \$45
HOGS—
 200 to 250 lbs., No. 1, \$30.00 to \$40.20
 200-250 lbs., No. 2, \$27 to \$30.50
 Heavy Hogs, 250 lbs. up, \$32 to \$37.50
 Light Hogs, 200 lbs., \$25 to \$38
BOWLS—
 Fancy Light, \$26 to \$27.50
 200-300 lb., \$24 to \$28
 300-lbs. and up, \$27 to \$28.50
Bones and Bones:
 All Weights, \$20 to \$30
Feeder Pigs:
 Per Head, \$15 to \$30
 Est. 40 lbs. pigs, \$28 to \$42
MAY—
 1st Culling, per bale, \$10 to \$11.15
 2nd Culling, per bale, \$11.00 to \$11.60
STRAW—
 Per Bale, 500 to 700
COWS—
 Tested Dairy Cows, \$300 to \$600
 Tested Beef Type Cows, \$200 to \$300

MICHIGAN MIRROR

By Warren M. Hoyt, Secretary, Michigan Press Association

Lottery on Top
 From nothing to tops in its field in just a bit more than four years. That's the success story of the Michigan lottery, which began its fifth year of operation only last month.

And with that birthday came the notion that the lottery has contributed some \$300 million to the state's general fund (about 45 percent of that goes to education) during its lifetime.

Michigan's lottery also is considered the nation's most successful, leading the dozen other states

with lotteries in categories of total sales and per capita sales.

Nearly one 50-cent lottery ticket per week for every man, woman and child in Michigan.

Figures from the Lottery Bureau show 1975-76 weekly average sales of more than 8.7 million, or 0.96 per person. That compares with 0.86 tickets per person per week (the next highest) in Connecticut, and only 0.43 per person per week in Pennsylvania.

Lottery sales nationally totaled nearly 2.2 billion 50-cent units, for a gross of \$1.08 billion.

Why is Michigan's lottery so popular?

Some folks figure it's the variety: first just the plain old 90-cent ticket, then the \$1 games and instant games.

In line with that notion, there's yet another game on the docket. Sometime in the following several months, the Lottery Bureau plans to set up a computer-based daily numbers game, complete with mini-computer at sales agent level.

Caution!

Don't let unwanted and potentially unhealthy creatures creep into your holiday dinner.

Handle foods with care to avoid organisms that can cause food poisoning.

Michigan's Department of Agriculture issues this warning to holiday cooks: Foods containing milk or milk products, eggs, meats, poultry or fish require refrigeration and should not be left standing for long periods of time. The best way to guard against possible contamination is to put leftovers in the refrigerator immediately after a meal.

A final note to turkey lovers—cook the bird to an internal temperature of 185 degrees F.

And if you're adding dressing to the turkey to cook them together, put the dressing into the body cavity just before roasting, and take it out of the turkey before storing in the refrigerator.

A Word to Veterans

Vietnam veterans who've applied for bonuses from the state, but haven't heard anything for a while, might best get in touch with the bonus section of the Department of Military Affairs.

Capt. Michael J. Rice, director

JUST REMINISCING

Items Taken from the files of The Chelsea Standard

4 Years Ago...

Thursday, Dec. 21, 1972

Following two evenings of try-outs, the cast of "Oliver," to be performed in March, was selected by director DIANN L. Roy. Among those culled from the many hopefuls were Jeff Daniels, who will portray Fagin, and Dave Clemans, who will appear in the role of the Artful Dodger.

The first Chelsea Bloodmobile visit this year conflicted with deer season but nevertheless drew a donation of 83 pints of blood.

Chelsea schools were closed Dec. 4, 13, 14, and 18 because of snow and ice that kept school buses off country roads.

At Dana's third annual Christmas party for employees' children, Harry Hadley, Jr., was the winner of a boy's bicycle and Jane Burnes won the girl's model. The prizes were awarded in a drawing.

Mrs. Floyd Riehmiller and Mrs. Louis Ramp were on hand Saturday morning to distribute Chelsea Social Service Christmas boxes and toys to the area's needy.

14 Years Ago...

Thursday, Dec. 20, 1958

Boy Scout Troop No. 76 honored Eagle Scout Jeff Spaulding at a Court of Honor Saturday, Dec. 15 in the junior high gymnasium before approximately 100 guests.

Five Chelsea area people were awarded gold pins this week, signifying their status as "gallon club" donors to the Chelsea Red Cross blood donor clinic. The five are Robert Harris, Charles Curtis, Raymond W. L. H. S., Dudley Holmes and Mrs. Stephen Slane.

An authentic film version of the flight of Astronaut John Glenn, entitled "American in Orbit," will be shown in the Woman's Club room of McKune Memorial Library Thursday afternoon.

Lyndon Township Board approved and adopted a permanent zoning ordinance for the township Dec. 13, after an interim zoning ordinance had been effective the past year. Announcement was made by zoning board secretary Mrs. Lucille D. Masterson.

A herd of 15 deer strolled through Chelsea Monday. After entering the town from the west, they crossed roads and continued to Main St., crossing from the Post Office to the Staffan property between Merkel's and McKune Library. They left via the eastern part of the village.

More than half of the veterans who took full-time training in resident schools, other than college, are employed in the same occupational field for which they trained, the Veterans Administration reported.

24 Years Ago...

Thursday, Dec. 18, 1952

Sylvan township supervisor Elba Gage received a letter from William L. Marvin, Metropolitan District Traffic Engineer, stating a survey of traffic patterns and accidents would be made in response to Gage's request for a traffic light at the intersection of M-52 and U.S. 12 in Sylvan township.

The annual grade school Christmas program in the Chelsea high school auditorium Dec. 23 will depict Christmas in America, England, France, Latin America, Germany, and Holland. Arranging the program are Keith Poulson and Mary Ann Wade with the help of classroom teachers.

Dave Strieter, Chamber of Commerce secretary, announced the registration deadline for Chelsea's Christmas outdoor lighting contest. Purpose of the contest is "to make this Chelsea's brightest Christmas."

Arlene Lesser's lightweight Angus steer placed sixth in its class of 63 entries at the Junior Livestock Show in Detroit last week.

Police Chief George Doe requested those persons calling the Chelsea Police or Chelsea Fire Department should state three important facts, what the trouble is, the location, and the name of the party calling.

34 Years Ago...

Thursday, Dec. 17, 1942

Raymond D. Gadd of Chelsea will attend a school for air raid warden instructors which starts in Jackson today and continues until Sunday.

Mrs. A. W. Wilkinson and Mrs. W. R. Daniels arranged a program entitled "Packing a Mental Box," whereby Christmas boxes were filled for shut-ins at the Chelsea Study Club Christmas meeting.

A war-time shortage of nurses in rural areas, including Chelsea, may be met by action of the Michigan Department of Health in arranging a six-week refresher course for inactive public health nurses.

Dr. Faye Palmer, veteran of World War I and prominent citizen of Chelsea, died suddenly Monday evening while returning from a meeting of the Chelsea Kiwanis Club to his home on Park St.

For every dollar spent this year by responsible organizations on legitimate research for the cause and cure of arthritis, more than \$24 will be spent by arthritis victims on useless "remedies" and "treatments" cooked up by quacks, the Arthritis Foundation reports.

Frank Geer Enters

Air Force Delayed Enlistment Program

Frank Geer, 37, son of Mr. and Mrs. Allen Geer, 6330 Joy Rd., Dexter, has entered the Air Force's Delayed Enlistment Program (DEP), according to his recruiter Technical Sergeant Bill Hughes, 3003 Washtenaw, Ann Arbor.

Geer's entry into the DEP serves two purposes, Hughes said. First, it allows the Air Force to schedule an opening for him to attend basic military training and be assigned to a job or skill area. Second, the DEP enables Geer to complete his high school education and wrap up personal affairs before commencing four years active duty.

His advice: If you've not heard recently, and were expecting some word, contact the Vietnam Veteran Era Bonus Section, 111 W. Mt. Hope Ave., Lansing, MI 48913, to confirm your address.

About 125 applications a week are still coming into the bonus section, and the state is paying out nearly \$25,000 a month in bonuses.

Any veteran who was a resident of Michigan for six months just before going into the service and served honorably for a minimum of 180 days during the Jan. 1, 1961 - Sept. 1, 1973 period in any type of armed forces service—and can fulfill residency requirements—is eligible for the Michigan bonus.

Payments include \$15 a month for each month served to a maximum of \$450.

Veterans awarded the Vietnam Service Medal or the Armed Forces Expeditionary Medal during this time are eligible for a combat bonus of \$600.

WOLVERINE TRUCK PLAZA

OPEN 24 HOURS DAILY

I-94 and Baker Rd.

Dexter, Mich.

SATURDAY, DEC. 18 - Noon to 10 p.m.
BREADED PERCH DINNER

Potatoes - Cole Slaw - Hot Roll

\$2.65

1/2 FRIED CHICKEN

Potatoes - Salad - Hot Roll

\$3.45

Breakfast Special - Served 24 Hours Daily

2 Country Eggs, Bacon or Sausage, 2 Hot Cakes
 Toast, Jelly, Butter

\$1.75

Flaming Pit

dinner specials:

SUNDAY - MONDAY - TUESDAY

COUNTRY STYLE CHICKEN

Salad Bar - Potato or Vegetable

All You Can Eat!

ADULTS, \$3.15 CHILDREN under 12, \$1.75

WEDNESDAY - STEAK NIGHT

7-OZ. STEAK or SHISHKABOB - \$4.45

Salad Bar - Potato or Vegetable

FRIDAY - SATURDAY

Wide Open Selections for Your Pleasure

FISH FRY THURSDAY - All You Can Eat

ADULTS, \$3.15 CHILDREN under 12, \$1.75

Try Our Alaskan King Crab

Longhorn Lounge

1750 Washtenaw, Ann Arbor 971-1500

SICK & TIRED of being SICK & TIRED

If you've been told there's no hope—that you just have to live with it—that you need surgery—that you have to take drugs for the rest of your life.

We make this challenge to you—Try our SPECIFIC Chiropractic care for 3 months, if you are not well or improved, we'll refund every cent you have spent with us!

We are not afraid to make this challenge because SPECIFIC Chiropractic works!—and results are what counts—call 475-7633 NOW!

1. Health comes when the body is working properly.
2. The intelligence flowing through the nervous system makes this body work.
3. When this intelligence is interfered with through falls, accidents, traumas, abuse, the body does not work, and therefore DISEASE is the result.
4. The SPECIFIC Chiropractor working WITH this intelligence, helps to remove this interference thereby allowing the body to restore itself to health.
5. It's as simple as that!

Dan Elwart, SPECIFIC Chiropractor

7970 Clark Lk. Rd., Chelsea, Michigan 48118

Call 475-7633

Open Mon., Wed., & Fri. 9-1 & 3-7

Tues., Thurs., & Sat. By Appointment only.

Standard Want Ads Will Sell Your Unwanted Items

If you paid taxes on a lump sum pension check received anytime since July 4, 1974, you may be able to get your tax money back!

You may have paid thousands of dollars in taxes which you may now get back and place in your own tax-deferred pension account at Ann Arbor Federal Savings.

You may be eligible if you had a pension plan with an employer who has gone out of business or who decided to terminate his plan for any reason, and gave you a lump sum pension check.

That money would have been added to your yearly income and heavily taxed in the year in which you received it. Now you may be able to get those taxes back.

CONGRESS ACTS TO CORRECT UNFAIR TAX PROBLEM

Under prior law, a person receiving a pension check when his employer terminated a pension plan had to add the lump sum payment to his yearly income and pay taxes on it. On April 15, 1976, Congress passed a new law that permits an

individual to deposit or "roll over" the lump sum payment into a tax deferred IRA pension plan, and to recover the taxes.

"ROLLOVER" YOUR MONEY INTO YOUR OWN PENSION PLAN

If you received a lump sum pension payment any time since July 4, 1974, you may qualify to place that money into your own "rollover" IRA account. If you paid a portion of that lump sum in taxes you may also be eligible to recover those taxes for your retirement account. Withdrawals from your retirement account can be made anytime after you reach age 59½.

CALL KAROL LEAKE 769-8300 FOR ASSISTANCE

Act now! Call Mrs. Leake at 769-8300 or stop in at any of our offices. The pension plan you thought you lost can now be yours again. And it's very possible, with our high interest paying savings accounts, much better than your old one.

For tax and legal advice consult your attorney or tax advisor

ANN ARBOR FEDERAL SAVINGS

11 OFFICES TO SERVE YOU IN: ANN ARBOR, BRIGHTON, CHELSEA, DEXTER, MANCHESTER, SALINE, YPSILANTI
 MEMBER FDIC

U. S. CHOICE

BEEF SIDES

Std. Cut
 Lb.

85¢

Average weight: 300 to 375 lbs.
 (\$1.10 lb. after processing)

PORK SIDES

Std. Cut
 Lb.

69¢

Average weight: 80 to 100 lbs.
 No Cutting Loss

NO WAITING

We Accept Federal Food Stamps

ORDERS READY TO TAKE HOME

Discount to Civic Groups

PHONE 426-8466

DUNBAR'S

8083 MAIN ST., DEXTER

DEXTER LOCKER

PAUL DUNBAR, OWNER

Woman's Club Christmas Party Held Tuesday

The regular meeting of the Chelsea Woman's Club of Chelsea held its annual Christmas party Dec. 12 at the home of Joyce Vogel. Twenty members enjoyed the evening exchanging gifts that had been prepared in something other than the usual paper. Pat Scholz and Turcott received prizes for most original wrapping. There also was an exchange of "secret gifts."

Refreshments were served by the members for the evening. Mary Pitt, Katherine Heeter and Jane Leeman.

A very short business meeting followed during which the group named a new member, Joanne. A minute of silent prayer was offered for Hazel Spaulding, one of our honorary members who was missed by all.

Magic Mirror Beauty Salon

Open Tuesday thru Friday
9 a.m. to 9 p.m.
Saturday, 8 a.m. to 3 p.m.
PHONE 665-0816

Legion Auxiliary Christmas Party Held At Methodist Home

The regular meeting of Herbert J. McKune American Legion Auxiliary, Unit No. 31, was held Tuesday, Dec. 7 at the Chelsea Methodist Home. The meeting was preceded by a pot-luck and Christmas gift exchange.

It was voted to order the poppies for the May Poppy Day sale. Roxie Maroney, child welfare chairman, urged members to save cancelled stamps. Money derived from sale of these stamps is used to buy equipment, clothing, etc., for Coldwater and Lapeer Children's Homes.

A report was given concerning the Gift Shop at Ann Arbor Veterans Administration Hospital. More than 200 patients selected Christmas gifts for their family. Gifts were Christmas wrapped and wrapped for mailing to the patients. Units from the Second and Seventh Districts purchased the gifts with money received from the sale of the little red poppy on Poppy Day. A beautiful selection of women's, men's and children's gifts were received and all patients who were able came and shopped for their gifts. All floors in the hospital were visited every day by two volunteers to shop for patients unable to leave their rooms. Gifts were all mailed on Thursday in time to reach their destinations before Christmas.

Next regular meeting will be Jan. 4 at St. Mary school hall.

Subscribe today to The Standard!

Holiday Buffet Greets Members of Child Study Club

The Dec. 14 meeting of the Chelsea Child Study Club was a holiday buffet at the home of president Joan Elsele. Hors d'oeuvres, a wassail bowl punch, and conversation began the festivities.

After dining on sweet and sour spinach salad and chicken strata, members exchanged home-made Christmas gifts with their secret pals. Cherries jubilee, tea and coffee concluded the evening.

Co-hostesses were Diane Borton, chairman, Shirley Chapman, Wyn Schumann, Pat Stirling, Helen Thomas and Sandy Weber. Each member chose a beaded felt tree ornament made by Nancy Grau, program chairman, as a memento of the 1976 Christmas Party.

The Jan. 11 meeting, entitled "What's New in Books," will be at the home of Diane Borton, 8 p.m., with Jaynor Johnston from Village Books of Chelsea speaking. Guests are welcome.

Modern Mothers See Slide Show Of Holy Land

Marilyn Chasteen acted as hostess for Modern Mothers' Dec. 14 event. The evening began at 6:30 p.m. with punch and appetizers served by co-hostesses Phyllis Tillman, Jeanine Riemenschneider and Lois Shively. Members then enjoyed a buffet dinner at candlelit tables decorated with the Christmas theme. Group singing, featuring LaVonne Harris at the piano, contributed to the holiday feeling.

The celebration was highlighted by "The Story of Christmas," an original narrated slide presentation. Joe and Marilyn Chasteen's slides of the Holy Land were set to background music and accompanied by an inspiring script of the Christ child's birth prepared by Barbara Brown.

A gift exchange and social hour followed.

Next meeting will be Jan. 11 at the home of Janet Rossi.

KINDER KLUB. Kinder Klub met Dec. 14 at the home of Jean Habb. Veretta Whitaker, general chairman for the Past Presidents Tea, organized the committee. A donation was given to the Firemen's Wives for the Christmas baskets.

Following a delicious lunch served by co-hostess Beverly Ives, Helen Bullock and Jean Habb, Teresa Doll acted as auctioneer for the baked goods and "white elephant" sale.

The evening ended with a gift exchange among the members.

Telephone Your Club News To 475-1371.

Rebekah Lodge Elects Officers

At the regular meeting of Chelsea Rebekah Lodge on Dec. 7, new officers for 1977 were elected as follows: Helen Harris, noble grand; Marian Pickell, vice-grand; Eulahlee Packard, secretary; Nina Lehmann, finance secretary; and Dorothy Keezer, treasurer.

Installation ceremonies for both the newly elected officers and those appointed to office will be held jointly with Harmony Lodge in Dexter on Jan. 3, beginning 8 p.m. The Earl Grey Degree team will preside as the installing staff of officers. Each officer to be installed is urged to attend in formal attire.

Five December birthdays were celebrated by members of the Rebekah Lodge following the election. Those honored included charter member Lottie Alexander, Flossie Lake, Nina Lehmann, Carrie Dunlap, and Nadine Packard.

The meeting concluded with the draping of the charter, conducted by the lodge deputy and her staff. It was announced the lodge has two walkers to loan to any person who needs one, and a motion was passed to remember area shut-ins with a gift at Christmas.

All members are reminded to bring one-half dozen home-made cookies to the next meeting, Dec. 21, 7:30 p.m.

Bird feeding stations and animal tracks are of special interest along the nature trails—open for "self-guided" hikes—at the Nature Study Area of Stony Creek Metropark near Rochester.

Town & Country Woman's Club Has Progressive Dinner

On Saturday, Dec. 11, Town & Country Woman's Club celebrated Christmas with a progressive dinner. The dinner was for members and their spouses.

Appetizers and punch were served at the home of Mr. and Mrs. William Colvin. The main course was served at the home of Mr. and Mrs. Randal Johnson, and dessert was served at the home of Mr. and Mrs. Warren Porath.

A gift exchange between "special friends" followed the dessert. Next meeting will be Jan. 11, at 7:30 p.m. The program will be a framing workshop. The meeting will be held at Ben Bower's studio, on W. Middle St.

Band Concert...

(Continued from page one)

er from Eastern Michigan University.

Selections to be performed include a Christmas Carol Suite by the 7th graders; a medley of seasonal tunes such as "Let It Snow," "Cool Room Jingle Bells," and "Rockin' on the Roof" by the 8th graders; "Jesus Christ Superstar" by the 9th graders; and Bach's "Jesus, On What Anguish" by those at the high school level.

The spirited blend of Christmas music will conclude with a sing-along to inspire audience participation. No admission will be charged for the concert although free-will donations will be accepted.

Altar Society Has New President

Poor weather conditions failed to reduce attendance at the St. Mary Altar Society meeting on Dec. 6, as 25 members gathered to participate in the group's monthly proceedings.

Many baby items were brought by members for donation to Catholic Social Services.

After the meeting, some Christmas poetry was read by Willeta Hafner, followed by an address by the Rev. Fr. David Philip Dupuis on his days in a seminary in Rome, Italy. Fr. Dupuis' recollections were sparked by the occasion of his then forthcoming silver anniversary of ordination, celebrated Dec. 8.

Altar Society members accepted the resignation of President Sally Kargel with regret, and wished newly-appointed President Mildred Eeles success during her term of office.

NOW OPEN
"CAROLS CUTS"
328 Wilkinson
CALL NOW!
475-7094

Appointments only!
SENIOR CITIZENS DISCOUNT

Give something very special



Keepsake
Registered Diamond Rings

WINANS JEWELRY

LYNN'S BEAUTY SHOP

1196 CHELSEA-MANCHESTER RD.
(across from Village Motor Sales)

475-1591

Complete Hair Care
Air Conditioned
Free Parking



HOURS:
Monday thru Wednesday 9 a.m.-2 p.m.
Thursday 9 a.m.-7:30 p.m.
Friday 9 a.m.-5 p.m.
Saturday 9 a.m.-12 noon

MAKE SOMEONE HAPPY WITH
Gift Records
Remember Heydlauff's for Your Christmas Albums, 8-Track Tapes, Cassettes as well as a large record selection for your Christmas giving

- ★ CLASSICAL
 - ★ COUNTRY
 - ★ COMEDY
 - ★ POP
 - ★ EASY LISTENING
 - ★ CHILDREN'S ALBUMS AND SINGLES
- NEW LP'S IN STOCK:**
- | | |
|--------------------|-----------------------------|
| BOSTON | "Boston" |
| BEE-GEES | "Children of the World" |
| FRAMPTON | "Comes Alive!" |
| CHICAGO | "X" |
| ELTON JOHN | "Blue Moves" |
| STEVE MILLER BAND | "Fly Like An Eagle" |
| DR. HOOK | "A Little Bit More" |
| ROGER WHITAKER | "Reflection of Love" |
| OLIVIA NEWTON-JOHN | "Don't Stop Believin' " |
| NEIL DIAMOND | "Beautiful Noise" |
| BOBBY VINTON | "All Time Greatest Hits" |
| JOHNNY CASH | "One Piece at a Time" |
| WAYLAN JENNINGS | "Are You Ready for Country" |

HEYDLAUFF'S
RECORD DEPARTMENT
13 North Main St., Chelsea Phone 475-1221

GIFT IDEAS

A GIFT CERTIFICATE FROM MERKEL IS A THOUGHTFUL WAY TO SAY YOU CARE! GOOD IN ANY AMOUNT AND GOOD ALL YEAR 'ROUND!



Merkel
FURNITURE AND CARPET

CHELSEA OPEN EVENINGS UNTIL CHRISTMAS • CHICAGO BLVD. TECUMSEH • PHONE 475-8621 MASTERCHARGE HONORED

Willow Metropark between New Boston and Flat Rock is one of Michigan's newest winter playgrounds. Facilities include hills for tobogganing and sledding, special runs for cross-country skiing. For information phone 897-9181 (Lower Huron Metropark, Belleville).

There's plenty of outdoor fun at Kensington Metropark near Milford this winter. Facilities include ice fishing and ice skating on Kent Lake, hills for sledding, special runs for toboggans, cross-country ski trails and cross-country ski rental service. For information, phone 685-1561 (Milford).



Model 031 AV

THIS IS THE BIGGEST SELLING LIGHTWEIGHT PROFESSIONAL CHAIN SAW IN THE WORLD.

**GET IT FROM
Huron Valley Garden Center**

AND IT'S A STIHL.

FREE SPLITTING MAUL WITH EVERY SAW OVER \$200
(Saws start at \$119.95)

**SPECIAL CHRISTMAS BONUS
FREE CARRYING CASE & ACCESSORIES**

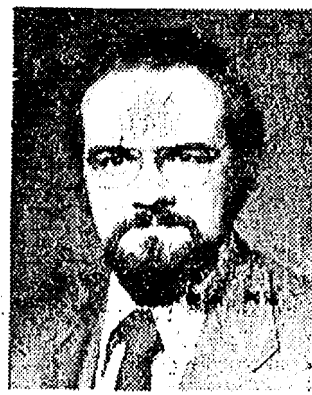
HURON VALLEY GARDEN CENTER

5024 Jackson Rd., Ann Arbor
SALES - SERVICE - 662-6714

IF YOU ARE SELF-EMPLOYED

You can set up a Keogh Retirement Plan through your Farm Bureau Insurance Agent that will

- Build funds for your retirement
- Allow you to put funds into the plan from your self-employed income, up to 15%, and up to \$7,500, with every dollar tax-deductible
- Accumulate earnings year by year free of taxes



Dave Rowe

Call us at 475-8065, or visit us at 107 1/2 South Main Street in Chelsea.

Find out what this plan can do for you.

**FARM BUREAU
INSURANCE
GROUP**



Farm Bureau Mutual • Farm Bureau Life • Community Service Insurance

AGRICULTURE IN ACTION

MICHIGAN FARM BUREAU

★ Farmers, Minority With A Mission

When a profession which once involved 95 percent of the population dwindles down to less than 5 percent in a short 200-year span — do the members of that profession have to "learn to act" like a minority group? According to the president of the state's largest farm organization, the answer is yes. "I do not mean by this that we become howlers like the dog on a thorn," said Elton R. Smith, dairy farmer who heads the Michigan Farm Bureau. "I mean we must grow to accept and express our responsibilities as individuals."

The farm leader spelled out how he thought farmers should accept and express their responsibilities as members of a minority group — by participating in groups dealing with energy, world food supply, transportation, consumer issues, land use planning and education. "We are currently going through a time in history when it is the vogue to have symposiums and conferences on many subjects by many groups. Decisions made and government action demanded by these groups concern agriculture and farmers are not having an input. We just can't let this happen," Smith said.

It won't be easy for farmers to sit in symposiums, especially when there's work to do out in the fields. But when they consider that one decision by lawmakers, brought about by pressures and demands from groups inexperienced and unknowledgeable in agriculture, can create havoc in their industry and perhaps wipe out an entire year's profits — this should be the needed incentive to "get involved."

Unlike some minority groups, farmers don't like being coddled. Convinced Congress of that fact — that they prefer the "security" of an open market to the "security" of government payments — will be one of their major challenges in 1977. A new farm program is in the offing and farmers fear a return to higher support prices, production restrictions and government-held reserves.

Getting this message across to Washington will be a real challenge. How successful they are in this mission — and in meeting the many other challenges ahead — will depend upon how willing farmers are to temporarily "leave their plows in the field" to get a job done. Their future, in which consumers have a big stake, depends upon how well farmers learn to "act like a minority."

Novice Debaters

(Continued from page one)

Central, Caledonia, and East Kentwood.

With a few league meets still on their schedule, Chelsea's novice debaters hope to solidify their position as SEC league leaders.

In varsity debate action, Chelsea will be sending a team to the Gold Cup Varsity Tournament at the University of Michigan on Jan. 8, and is currently preparing for varsity district competition at Eastern Michigan University, also in January.

Forensics Spring Preview Competition

In preparation for spring forensics competition, some 60 CHS sophomores from two speech classes at Chelsea High participated in an informative speech contest conducted by forensics coach William Coelius at the high school two weeks ago. Winners of the final round on Wednesday, Dec. 8, were Caroline Enderle and Marleyn Seitz.

Miss Enderle was awarded top honors for her speech, "Writing Romantic Fiction," while Miss Seitz surpassed all rival contestants with an address on "Fads."

Other finalists included Gayle Albrecht, Carrie Lane, Cindy Welshans, Sheryl Kiel, Sue Heller and Nancy Drew.

"All the contestants have hopes of using their theme speeches to earn a place on the CHS forensics team," said Coach Coelius following the competition. The students chose their own topics, which resulted in a wide variety of presentations, ranging from Miss Lane's "Carnival Games" to Miss Heller's "Candy."

"Purpose of this preview competition was to give first semester sophomores a chance to sharpen their skills and test their abilities," the coach added. Only two sophomores will be selected to represent Chelsea in the informative speaking category of upcoming inter-school forensics competition.

In Wednesday's contest, those finalists competing had been culled from preliminary and semi-final elimination rounds. The two winners were selected by a judging panel of Chelsea High school teachers.

District Court Proceedings

Week of Dec. 6-13

David C. Martin pled no contest to charges of drunk and disorderly. Fines and costs, \$40.

Eldene Finkbeiner was found guilty on charges of drunk and disorderly. Fines and costs, \$50.

Robert Eastman, Jr. pled guilty to charges of drunk and disorderly. Fines and costs, \$50.

Darrell Cope pled guilty to charges of driving under the influence of liquor. He was referred to probation and will be sentenced Feb. 1.

James Porter pled guilty to charges of leaving the scene of an accident. He will be sentenced Feb. 1.

Karen Beck pled guilty to charges of no proof of registration and no proof of insurance. Fines and costs, \$17.

William Andrews pled guilty to charges of speeding. Fines and costs, \$44.

Steven Martin pled guilty to charges of drunk and disorderly. Fines and costs, \$50.

Timothy Kester was found guilty on charges of careless driving. Fines and costs, \$25.

Richard Ganzhorn was found guilty on charges of improper passing. Fines and costs, \$17.

Robert Cooper was sentenced to pay fines and costs of \$50 on charges of allowing his bull to run at large.

ANDY SAYS: "MORE PRE-CHRISTMAS SPECIALS"

Store Manager Andy Fleischmann says "thank you" for your response from last week's ad. So here are MORE specials! Again we guarantee ALL prices until Christmas Day 1976.

UNDER CAR CREEPERS

Use 'em under the car or let the kids play with 'em. **\$9.95**

FULL-SIZE ANTI-FREEZE TESTERS

\$1.95 ea.

REAR WINDOW DEFOGGER KITS

\$7.95

AH-OOGA HORNS . . ea. **\$18.02**

PORTABLE - ELECTRIC

AIR COMPRESSOR ea. **\$18.50**

Operates from cigarette lighter. Pumps up to 65 lbs. pressure.

Snowmobile BATTERIES

\$20.95

JACK STANDS

\$2.95 ea.

USE YOUR BANKAMERICARD
or MASTER CHARGE.

HEADLIGHT AIMER KIT

\$8.95 ea.

STOCKING STUFFER
POCKET

TIRE GAUGES

\$1.95

HEAVY DUTY
OIL FILTER

WRENCH

\$2.67

Tachometers
Oil Guages
Ammeters

1 1/2 TON FOXCRAFT 4-WHEEL FLOOR JACK . . **\$89.95**

EXCELLENT QUALITY HYDRAULIC JACK

TOOL SETS

14-pc. with ratchet,
3/8" drive
\$11.95 ea.

D. C. POWER TIMING LIGHTS

from
\$15.95

WHEEL BALANCERS NOW **\$15.95**

7-PC.
Screwdriver Sets . . **\$4.75**

STEERING WHEEL COVERS

\$5.58

TOOL SETS

21-pc. with ratchet,
3/8" drive
\$15.95 ea.

Battery Chargers from **\$10.95**



Boyer
AUTO SUPPLY INC.

108 E. Middle Street, Chelsea

Phone 475-1366

We've Found A New Home MIKE'S SHIRT SHOP

Located inside Fabric City at the

Arborland Shopping Center

NEW SELECTION OF

SHIRTS & TRANSFERS

NOW IN STOCK

... Create A Custom Christmas Gift ...

Prices Start at **\$3.50**

Thousands of Shirt and Transfer Combinations

Stocking Stuffer Special

CHILDREN'S SMALL & MEDIUM

**GREY TEES
WITH NAME**

Only \$2.00

COUPON

10% OFF COUPON

On Purchase

Now Thru Christmas

10% OFF COUPON



SANTA VISITS HOSPITAL: The lit of a merry "Hot Hot Hot" rang through the halls of Chelsea Community Hospital Tuesday afternoon, Dec. 14, as Santa Claus continued making his traditional visits throughout the Chelsea area. As he visited hospital patients, Santa passed out presents and enveloped both adults and children with Christmas cheer. In the above photo, the jolly, North Pole

Hospital Volunteers Host Patient Christmas Party

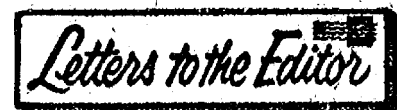
Volunteers of Chelsea Community Hospital held their annual holiday party for more than 125 hospital patients and guests last Sunday afternoon, Dec. 12. Entertainment was provided by The Friars, a singing group of nine men from the University of Michigan.

Vocal selections presented by the group included "The Sunshine Girl," "Ding Dong Daddy," "One Minute More," and carols of the season.

The singing group, consisting of Bill Legros, Phil Smith, Bruce Johnson, Jack Baker, Mark Kaufman, Doug Shepherdigan, Jeff Sinclair, Brian Cook, and Tracy Beggs also sang in the hospital corridors for the benefit of those patients unable to attend the dining hall party.

In addition to entertainment by The Friars, two Chelsea residents, Kim Longworth and Jennifer Clason, serenaded party-goers with John Denver songs which they sang while accompanying themselves on guitar.

To complete the party atmosphere, fruit punch and Christmas cookies were served by hospital staff and volunteers.



To Whom It Concerns,

Recently a representative of the Road Commission contacted me and explained what they would like to do to Ridge Rd. If I will donate the land they will widen the road 40 feet and black-top it in the near future.

I am going to apply to the zoning board to have my property rezoned back to agriculture. It should not have been changed to Recreation, Conservation in the first place, if I had known at the time I would have protested.

If my rezoning goes through OK then we will negotiate on the road improvement.

After I read the article in The Chelsea Standard about the petition on the Coltre property, it made me very disgusted to think a handful of people can tell you what you can or can't do to one's own property. I think they are infringing on one's rights.

How many of the people who signed the petition have large enough lots to pass today's sanitation laws?

I don't see how the rezoning of the Coltre property concerns anyone at Cavanaugh Lake!

A. L. Sexton,
1231 Ridge Rd.

Survey of '76 Grads Underway

This week follow-up survey forms were mailed to members of Chelsea High School's Class of 1976.

Purpose of the study is to determine what the graduates are doing now, and what they feel were the strengths and weaknesses of the high school program to prepare them for "life after high school."

Parents of graduates are urged to forward the form to their son or daughter if they are not living at home. The forms are being mailed at this time in the hope of catching more graduates at home during the holiday season.

Graduates are urged to complete the form and return it to the high school.

This is the fourth year that Chelsea High has participated in this state-wide survey. Information gathered by the study is used by the Michigan Department of Education to help local districts build quality vocational programs. Locally the school district uses the information to determine curriculum changes by evaluating existing courses both as to necessity and effectiveness.

Telephone Your Club News
To 475-1371.

Marathon Bridge Team Standings

Marathon Bridge has been under way for three months. This year the program has been expanded to 43 members with 12 teams in each league.

Some good scores have been turned in and everyone seems to be having a good time. Following are the standings so far this season.

AFTERNOON LEAGUE

Team No. 9	8,690
Team No. 8	8,500
Team No. 6	8,020
Team No. 2	7,500
Team No. 4	7,190
Team No. 10	7,140
Team No. 1	7,430
Team No. 11	6,950
Team No. 3	6,430
Team No. 12	5,280
Team No. 5	3,760
Team No. 7	3,440

EVENING LEAGUE

Team No. 12	12,910
Team No. 5	8,180
Team No. 10	8,900
Team No. 8	8,620
Team No. 4	7,840
Team No. 7	8,470
Team No. 2	8,330
Team No. 11	5,870
Team No. 3	4,400
Team No. 6	4,440
Team No. 1	3,900
Team No. 9	3,700

Eight of every 10 veterans enrolled in apprentice or on-the-job training programs under the GI Bill, normally complete courses of instruction, the Veterans Administration reported.

\$1-\$1-\$1
CALL ANY TIME
(517) 372-5536
\$1-\$1-\$1

Raise and sell puppies by the litter. This can produce \$10,000 annually. We assist and have buyers.

Dexter Township Parcels Must Now Have Access

Dexter Township Board held its regular meeting on Dec. 7, and voted to amend the Township Zoning Ordinance to require that all parcels created or parcels on which a structure is to be built adjoin a public street, a private street or a permanent access easement.

Private streets and access easements are to be regulated by a private road ordinance, which is in the final stages of preparation and is expected to be acted upon within the next month.

Items that will be considered in the near future are the Dexter fire contract, the Bouillion site plan and insurance coverage.

The next regular meeting will be Tuesday, Jan. 4, at 7:30 p.m.



It's never too early TO DO YOUR CHRISTMAS SHOPPING

- ★ **Electroponic Stereo, complete** \$170
AM/FM Stereo - 8 track - Record - Play Turntable and Speakers
- ★ **PANASONIC TAPE RECORDER**
Reg. \$54.95 NOW \$42.95
- ★ **AM/FM POCKET RADIO** \$11.95
- ★ **15% DISCOUNT on Band Instruments for Christmas**
- ★ **LP's & precorded tapes - Now in Stock**
- ★ **Maxell Low Noise Quality Recording Tapes - 7" reel to reel** \$8.75

- Guitars Still 30% off
- Pearl Drum Set Save \$200
- Kris CB's, only 2 Save \$50
- Baldwin Interlude Organ \$995

LESSONS - SPEEDY REPAIRS

THE MUSIC HUTCH

8107 Main St., Dexter Ph. 426-4380
Open Fridays 'til 8 p.m. - Saturdays, 10-5

DAVIDSON STATION
BEER BATTER FISH FRY
Every Friday Night
5 p.m. to 9 p.m.
A friendly family tavern
since Jan. 7, 1871.
113 S. MAIN CHELSEA

Dial-A-Garden Topics Listed

Dial-a-Garden, the system of pre-recorded daily gardening tips is sponsored by the Washtenaw County Co-operative Extension Service. The system is in operation 24 hours per day, 7 days per week. Interested persons are invited to call 971-1129 at their convenience and receive timely, up to date gardening information.

Next week's Dial-a-Garden topics are:
Friday, Dec. 17 - "Poinsettia."

- Monday, Dec. 20 - "Christmas Cactus."
- Tuesday, Dec. 21 - "Jerusalem Cherry."
- Wednesday, Dec. 22 - "Cyclamen."
- Thursday, Dec. 23 - "Norfolk Island Pine."

More than half of college-level trainees under the GI Bill received bachelor's degrees, the Veterans Administration reported.

Full Line Supermarket
MARATHON GAS PUMPS
BEER - WINE - LIQUOR
U.S.D.A. CHOICE BEEF
AUTHORIZED FOOD STAMP STORE

Jiffy market

Big Enough To Serve You . . . Small Enough To Know You!
CORNER OF SIBLEY & WERKNER RDS. . . CHELSEA, MICHIGAN

Open 7 Days A Week
7 a.m. to 10 p.m.
Corner Werkner & Sibley Rds. PHONE 475-1701
Sale Prices Effective Thursday, Dec. 16 through Friday, Dec. 24

Prices Good thru Dec. 24 — Guaranteed Satisfaction — Courteous Service — Prices Good thru Dec. 24

JIFFY MARKET SPECIALS

- MAXWELL HOUSE
INSTANT COFFEE . . . 10-Oz. Jar **\$2.98**
- WONDER
Country Style BREAD . 3 1 1/4-Lb. Loaves **\$1.00**
- BUNNY POP
Popcorn, yellow or white . . 2-Lb. Bag **39c**
- FARM MAID
ORANGE JUICE . . . 1/2 Gal. **59c**
- FARM MAID
WHIPPING CREAM . . . 1/2 Pint **49c**
- FARM MAID
SOUR CREAM . . . 1 Pint **49c**
- 10-OZ. NO-RETURN BOTTLES
7-Up, Frostie, Root Beer, Orange Crush, 7-Up Diet 8 pac **\$1.29**
- KRUNCHEE, NEW FOIL PKG.
POTATO CHIPS . . . 12-Oz. Pkg. **79c**
- NEW LARGE
SPANISH ONIONS . . . Lb. **15c**

JIFFY MARKET CHRISTMAS TREE LOT



BEAUTIFUL TREES
LARGE SELECTION

TREE LOT OPEN
7 a.m. to 10 p.m. daily

For a special tree call Charley, 475-7530

These trees were planted, grown, trimmed, shaped, and fresh cut by Charley Smith and sons.



BASKART SPECIAL

LOWFAT MILK

ONE GALLON CARTON **97c**
FARM MAID DAIRY

16-OZ. NO-RETURN BOTTLES

COCA-COLA
8 pac **\$1.29**
Equals 1 gal.

HOLIDAY FOODS

- CHRISTMAS CANDIES
- FANCY BULK NUTS
- FULL ASSORTMENT LIQUORS
- BEER - CASE OR KEG
- LARGE ASSORTMENT WINES
- DATES - FIGS
- GLAZED FRUIT
- MINCEMEAT - EGGNOG
- CAKE DOCORETTES
- SPICED PEACHES - PEARS
- HAM - CHEESE PLATES

JIFFY MARKET MEAT DEPT.

FEATURES U.S.D.A. CHOICE BEEF

- U.S.D.A. CHOICE
ROUND STEAK lb. **\$1.49**
- U.S.D.A. CHOICE
RIB STEAK lb. **\$1.39**
- 1/4 LOIN SLICED, 9-11 CHOPS IN PKG.
Quarter Loin Pork Chops, lb. **\$1.19**
- YOUNG, TENDER
BEEF LIVER lb. **49c**
- FARMER PEET'S
RING BOLOGNA lb. **98c**
- ECKRICH BEEF, MAPLE OR REG. FLAVOR
SMOKY-LINKS 10-Oz. Pkg. **89c**
- FARMER PEET'S ROLLED BONELESS
HAM SLICES lb. **\$1.89**
- HOME-MADE
PORK SAUSAGE lb. **99c**
- LEAN, MEATY U.S. CHOICE
BEEF SHORT RIBS lb. **49c**

TURKEY

U. S. GOVERNMENT INSPECTED GRADE A PRIME YOUNG TURKEY

59c lb.

FULL SELECTION OF TURKEYS
BUTTERBALL TURKEYS - TURKEY ROLLS
FRESH OYSTERS, DUCKS, GEESSE, ROASTERS



GAS PUMPS & STORE OPEN 7 a.m. to 10 p.m. 7 Days a Week — U. S. Authorized Food Stamp Store — Daily & Sunday Papers

Community Calendar

Past Matrons Club of Olive Chapter No. 108 OES, pot-luck, and \$1 gift exchange, 12:30 p.m., Thursday, Dec. 16 at the home of Mrs. Martin Steinbach.

Huron Valley Bee-keepers Association, Thursday, Dec. 16, 7:30 p.m. in the Liberty Room, Ann Arbor Federal Savings and Loan Building, corner of Liberty and Division Sts., Ann Arbor. Election of president, and film presentation, "Language of the Bees." Public welcome.

Parents Special Education group, fourth Monday of each month, 7:30 p.m., room 204, Chelsea High school.

Child birth preparation classes, LaMaze method, are being held at Chelsea Community Hospital Tuesday evenings. Contact Dee Burkel, 475-9316, for information.

Inquiries regarding the Chelsea blood bank may be directed to Harold Jones in the event that Mrs. Dudley Holmes is unavailable, or to Cornelia Fry, American Red Cross in Ann Arbor, 971-5300.

Chelsea Jaycee Annual Blood Drive, Saturday, Dec. 18, 9 a.m. to 3 p.m. at the UAW Hall next to the Post Office. For information, and/or appointment to give blood, call Dave Monroe, 475-7130, or Al Sheffield, 475-2081.

Chelsea Social Service hours are Thursday, 10 a.m. to 4 p.m., or call 475-1581, or 475-1012.

AA and Al-Anon meeting, Monday evenings at Chelsea Hospital, 8:30 p.m. Closed meetings.

Sharon Township Board regular meeting first Thursday of each month.

Chelsea Rebekah Lodge No. 130 regular meetings the first and third Tuesday of every month, 7:30 p.m.

Lima Township Planning Commission regular meeting the third Tuesday of every month, 8 p.m. at the Township Hall.

Chelsea Home Meal Service delivers one hot meal a day to elderly and disabled living in the Chelsea area. For information call 475-8014 or 475-2923.

Chelsea Jaycees general membership meeting first Tuesday of each month, 7:30 p.m. at Chelsea Lanes. Monthly board meeting last Tuesday of each month, 7:30 p.m. at Inverness Inn.

Chelsea Senior Citizens Christmas pot-luck, Wednesday, Dec. 17, 6:30 p.m. at St. Mary school hall. Exchange of \$1 gifts.

Dexter-Chelsea LaLeche League Monday, Dec. 20, 8 p.m. at the home of Jan Knobloch, 980 Ridge Rd., Chelsea, phone 475-9254. Topic, "Nutrition and Weaning." All interested women welcome.

Beginning Nov. 16, Lyndon Township Board meetings, previously held on the third Thursday of each month, will instead be held the third Tuesday of each month, 7 p.m., at Lyndon Town Hall.

McKune Memorial Library hours are Monday, 10-5 and 7-9; Tuesday, 12-5; Wednesday, 12-5 and 7-9; Thursday, 10-5; Friday, 10-5 and 7-9; and Saturday, 12-5.

Winter meeting schedule for Chelsea Senior Citizens, beginning January and continuing through March. First Friday of the month, business meeting and cards, 7:30 p.m.; third Friday of the month, pot-luck and cards, 8:30 p.m. All meetings in St. Mary school hall on Congdon St. Friday, Dec. 24 meeting is cancelled because of Christmas Eve, and Friday, Dec. 31 meeting is cancelled because of New Year's Eve.

Lima Township Board regular meeting the first Monday of the month, 8 p.m. at Lima Township Hall.

JV Cagers Defeated By Novi, Brighton

Chelsea High's JV cagers dribbled to defeat last Friday, losing to Novi, 49-72, and returned to the courts again on Saturday, only to fall behind Brighton by one point in the last second of play.

"We started out flat, 0-8 behind Novi, and had to play catch-up all night," said Coach Paul Terpstra following Friday's game. "Novi shot 50 percent from the floor, dominating with excellent leadership," he added to explain the loss.

Leading scorers for the Bulldogs were Larry Dills with 14 points, Charlie Bridges, 13, and Matt Feeney, 9. High rebounders were Bridges with 9 and Don Schrotenboer with 7.

On Saturday, Brighton slipped past Chelsea, 53-52, edging ahead in the last second by sinking two free throws. "The game was a thrilling contest most of the way, especially as we fought back in the last three minutes after being down by 7," Coach Terpstra stated.

According to Terpstra, the well-balanced scoring for the Bulldogs was led by Dills with 14 points. Also scoring were Schrotenboer and Al Augustine, 8 each, and Mike Eiselle, Jesse Coburn, and Bridges, 6 each.

Top rebounders for Chelsea were Dills with 9 and Coburn, Schrotenboer, and Augustine, 6 each.

Two weeks into the season, the JV record now stands at 1-3. The JV cagers are scheduled to face off against South Lyon Friday, Dec. 17, on their home court.

Business and commerce is the major field of study among college-level students training under the GI Bill, according to the Veterans Administration.

AREA DEATHS

George A. Steele

Life-Long Chelsea Resident Dies at Nursing Home

George A. Steele, 84, of 17380 Garvey Rd., died Wednesday, Dec. 15 at Cedar Knoll Rest Home. Mr. Steele had been in failing health for the past year.

He was born March 22, 1892, to John and Mary Steele of Selo. He married Mary Kolb in Chelsea on Sept. 17, 1912. She preceded him in death on March 28, 1956.

A life-long resident of Chelsea, Mr. Steele was a self-employed farmer. He was a member of Washtenaw County Farm Bureau, Senior Citizens of Chelsea, and St. Mary Catholic church.

Survivors include three daughters, Mrs. Melvin (Catherine) Lester of Munnich, Mrs. N. H. (Margaret) Miles of Chelsea, and Mrs. Theron (Rosemary) Fletcher of Milford; three sons, John W. Steele of Jensen Beach, Fla., Joseph A. Steele of Parchment, and Robert D. Steele of Chelsea; one sister, Sister M. Angeline; 26 grandchildren; and 26 great-grandchildren. Two grandchildren preceded him in death.

Funeral services will be held Saturday, Dec. 18, 11 a.m. in St. Mary Catholic church, Chelsea, with the Rev. Fr. David Philip Dupuis officiating. Burial will follow in Mt. Olivet Cemetery.

Rosary will be recited Friday, Dec. 17, 7 p.m. Friends may call anytime, after 12 noon Thursday (today), Dec. 16.

Memorial contributions may be made to the St. Mary Catholic church Building Fund. Arrangements are by Staffan Funeral Home.

Sarah Jane Collins

Infant Dies Friday Shortly After Birth

Sarah Jane Collins, infant daughter of Mr. and Mrs. Mark Collins of 4516 Plymouth Rd., Ann Arbor, died several hours after birth on Dec. 10 at Mott's Children's Hospital, Ann Arbor. She was the daughter of Mark and Debra Davis Collins, who survive.

Other survivors include the paternal grandparents, Jack Collins of Chelsea, and Mrs. Dorothy Collins of Lansing; and maternal grandparents, Mr. and Mrs. Harold Davis of Hot Springs, Ark., as well as several aunts, uncles and cousins.

Graveside services were held at 1:30 p.m. on Tuesday, Dec. 14 at Washtenaw Memorial Park, Ann Arbor. Arrangements were made by Burghardt Funeral Home.

SPORTS

A son, Daniel Eric, to Mr. and Mrs. David L. Johnston of Gregory on Nov. 14 at St. Joseph Mercy Hospital, Ann Arbor. Maternal grandparents are Mrs. Lydia Penhallegon of Chelsea and the late Albert S. Penhallegon. Paternal grandparents are the late Mr. and Mrs. Clarence Johnston of Gregory.

Mrs. Harold Spaulding

Dies Thursday, Dec. 9 at Chelsea Community Hospital

Mrs. Harold E. (Hazel M.) Spaulding, 78, of 745 Howard Rd., died Thursday, Dec. 9, in Chelsea Community Hospital. She had been in poor health for some time.

She was born in Grass Lake on March 23, 1898, to William and Jessie Bush Eisenbeiser. She married Harold E. Spaulding on Aug. 28, 1925. He preceded her in death on April 28, 1954.

A graduate of Ypsilanti State Normal College, now Eastern Michigan University, Mrs. Spaulding had taught in the Jackson Public School system. She was a member of First Congregational church, a charter member of the Woman's Club of Chelsea, and a life member of Olive Chapter No. 109, Order of Eastern Star.

Survivors include a son, Rolland Spaulding of North Lake; three brothers, Lynn Eisenbeiser of Jackson, and Warren and Leslie Eisenbeiser of Chelsea; eight grandchildren; five great-grandchildren; and several nieces and nephews. She was preceded in death by a daughter, Mrs. Thomas (Virginia) McClear on Aug. 15, 1975, and a sister, Mrs. Leon (Eleanor) Shutes in 1971.

Funeral services were held Monday, Dec. 13, 1 p.m. at Burghardt Funeral Home with the Rev. Carl W. Schwarm officiating. Burial followed in Vermont Cemetery.

Funeral services will be held Monday, Dec. 13, 1 p.m. at Burghardt Funeral Home with the Rev. Carl W. Schwarm officiating. Burial followed in Vermont Cemetery.

Funeral services will be held Monday, Dec. 13, 1 p.m. at Burghardt Funeral Home with the Rev. Carl W. Schwarm officiating. Burial followed in Vermont Cemetery.

Funeral services will be held Monday, Dec. 13, 1 p.m. at Burghardt Funeral Home with the Rev. Carl W. Schwarm officiating. Burial followed in Vermont Cemetery.

Mrs. LaVerne Simonds

Former Lima Township Resident Dies at Adrian

Ethel I. Hashley Simonds, 81, of Jasper died Wednesday, Dec. 8, at Lenawee Medical Care Center, Adrian. She was born April 2, 1895 in Lima township to Mason and Edith Leach Whipple.

She was first married to Herman J. Hashley who preceded her in death in 1958. She married LaVerne B. Simonds in Adrian on Oct. 24, 1970. He survives.

Among her activities, Mrs. Simonds was a member of Adrian Senior Citizens. A former resident of Lima township, she moved to Jasper where she was a resident for the past six years.

In addition to her husband, survivors include two daughters, Mrs. Lloyd (Joyce) Boyce of Dexter and Mrs. Donald (Janice) McLean of Saline; two step-sons, Robert L. Simonds of Battle Creek and Richard K. Simonds of Bronson; five step-daughters, Mrs. Richard (Geraldine) Kitson of Adrian, Mrs. Donald (Bernadine) Heator of Jasper, Donna Lee Donahue of Bellevue, O., Mrs. Beverly Sinclair of Hudson, and Mrs. David (Patricia) Hamann of Adrian; five grandchildren; 22 step-grandchildren; three great-grandchildren; two nieces; and one nephew. She was preceded in death by one sister, Mrs. Hazel Sietz.

Funeral services were held Saturday, Dec. 11, 2 p.m. at Hosmer Funeral Home, Dexter, with the Rev. Virgil Oyer officiating. Burial followed in Oak Grove Cemetery.

Harold W. Hunawill

Dexter Businessman Dies Friday After Heart Attack

Harold W. Hunawill, 62, of 8740 Forest St., Dexter, died Friday, Dec. 10 in his home following a heart attack.

He was born June 22, 1914 in Ann Arbor to Richard and Harriet Cleaveland Hunawill. He married Dorothy Ball of Dexter on Nov. 4, 1933. Mrs. Hunawill, active in Dexter politics for many years, survives her husband and is presently awaiting discharge from a local hospital where she underwent surgery.

A life-long resident of the Dexter area, Mr. Hunawill was self-employed for the last 30 years. He was owner of a heavy-machine repair and moving company known as "Shorty's Service." This business firm had clients country-wide, and was recently involved with the construction of a shopping center in Sterling Heights.

Mr. Hunawill was a member of Operating Engineers Union Local 324, and active in both the Moose Club and Eagles Club Ann Arbor chapters.

In addition to his widow, he is survived by one son, Robert Hunawill, stationed with the U. S. Army in Ft. Devens, Mass.; one daughter, Mrs. Harold (Barbara) Bertke of Manchester; two brothers, Richard Hunawill of Ann Arbor, and Fred Hunawill of Thonassassa, Fla.; one sister, Mrs. Leonard (Ardis) Quigley of Chelsea; and seven grandchildren. One sister, Irene Hunawill, preceded him in death.

Funeral services will be held Saturday, Dec. 18, 2 p.m. at the Staffan Funeral Home with the Rev. Fr. C. Walton Fitch of St. James Episcopal church, Dexter, officiating. Burial will follow in Mt. Olivet Cemetery, Chelsea.

Funeral services will be held Saturday, Dec. 18, 2 p.m. at the Staffan Funeral Home with the Rev. Fr. C. Walton Fitch of St. James Episcopal church, Dexter, officiating. Burial will follow in Mt. Olivet Cemetery, Chelsea.

Swimming Pool...

(Continued from page one)

the Christmas and New Year's holidays.

The pool will not be open on Thursday, Dec. 16 because of a varsity swimming meet.

Anyone interested in adult or children's swimming and diving lessons will be able to register after the first of the year for the new winter session.

Chelsea. Memorial contributions may be made to American Heart Fund in Mrs. Simonds' name. Envelopes are available at Hosmer Funeral Home.

HELEN'S BEAUTY SHOP
8845 Dexter-Chelsea Rd.
Call Now
PHONE 426-2241
DAYS AND EVENINGS
BY APPOINTMENT
Senior Citizens
Discount 20%

Hockey Team Loses, 4-2, To Western

(Continued from page one)

7:58 in the first period Bayer was given a 10-minute misconduct penalty.

At 4:49 in the second period Greg Hastings took the puck away from a Western defenseman and passed the puck out in front of the Western net where Harold Vandervoort was waiting. Vandervoort drove the puck into the goal to put Chelsea ahead, 1-0.

Then at 11:03 Dave Burg took the puck into Western's zone and shot a hard slap shot into the Western goal. This made the score 2-0 Chelsea.

At this point it looked like Chelsea had the game in hand, but at 13:18 Western came back as Brad Bayer sent the puck up into the left-hand side of the Chelsea net. The period ended with the score, 2-1, Chelsea.

The third period was to tell the story. Chelsea began to fall apart. The Bulldogs received six penalties in the period, causing them to play shorthanded for most of the period. Western jumped on the opportunity. Chris Richmond, Bill Aiken, and Andy Andrews all scored goals for Western during the period. The final score again was Western 4, Chelsea 2.

Next Sunday, Chelsea will play Hanover-Horton at 7:30 p.m. This will be the first meeting of the two clubs this season.

The regular season play will stop for the Christmas Season, but the teams will play in a Christmas Tournament, set up between the Jackson league and Lansing's league. The first round will be played on Dec. 26. Chelsea will play Harry Hill at 7:30 p.m. against the winner of the Waverly and Jackson game. The loser of the Dec. 26 game will play Dec. 27 at 8 p.m.

All tournament games will be played at the Lansing Ice Arena, 1475 Lake Lansing Rd.

Children will have an opportunity to visit Santa in the big barn at the Kensington Metropark near Milford daily from Saturday, Dec. 18 through Friday, Dec. 24 from 11 a.m. to 4 p.m., plus week-end hours of 10 a.m. to 6 p.m. General admission is \$1.25 for adults and 75 cents for children.

Appears as Soloist With Albion Choir

Jeanne L. Thornton, an Albion College junior, was featured as a soloist in the Albion College Choral Society's performance of Handel's "The Messiah," last Sunday, Dec. 12 in Goodrich Chapel on the college campus.

The choral group was accompanied by Albion College Orchestra. Conducting the performance was Mel Larimer, associate professor and chairman of Albion's music department.

Miss Thornton, a contralto, is a 1974 graduate of Chelsea High school currently studying music education at Albion. She is the daughter of Mr. and Mrs. Robert Thornton of Riker Rd.

Stony Creek Metropark near Rochester is one of Michigan's most popular winter playgrounds. Facilities include ice fishing, ice skating, tobogganing, sledding, and cross-country skiing plus skirental service. For details phone 781-4242 (Washington).

GAMIBLES
FOR TV SPECIALS

RCA XL-100
100% Solid State
Color TV
15" diagonal

Reg. \$349.95
Now Only **\$299.95**
SAVE \$50.00

RCA BLACK/WHITE TV \$99.00
12" diagonal screen, Now

CORONADO B/W TV \$88.00
12" diagonal screen, Now

SAVE NOW ON THESE SANTA SPECIALS

GAMIBLES

PLAY AND RECORD STEREO CENTER

SAVE \$30.08

SOUNDS LIKE A MILLION BUT IT'S ONLY **\$149.87**
Reg. \$179.95
STAND \$19.95

You get 3-speed BSR changer AM/FM/Stereo built in 8-track recorder/player 2 1/8" foam grill speakers 2 tapes, 2 mikes.

Deluxe pushbutton and slide controls. Full accessory back panel. Fantastic sound.

Quantities Limited

family plan

Use your credit at Gambles

HURRY IN FOR THIS GREAT GIFT BUY!

HOLIDAY SALE
men's
Polyurethane JACKETS
\$19.99
Reg. \$25 to \$40. Short or long styles. Lined or unlined.
Open every night till 8:30 p.m. until Dec. 24
Saturday till 5:30.

STRIETER'S CHRISTMAS STORE FOR MEN

GREAT HOLIDAY BUY!

GENERAL ELECTRIC POTSCRUBBER DISHWASHER
NOW ONLY **\$219.95**
Portable Now! Built-In Anytime!

3 wash cycles including Power Scrub* for pots, pans, casseroles! Powerful 3-level wash action in all cycles includes GE's famous Soft Food Dispenser that eliminates pre-rinsing -- Dual Detergent Dispenser -- new Tuff Tub* interior -- Durable Textolite* worktop. And it rolls from table to sink to cupboard!

GE Family-Size, Easy-to-use MICROWAVE OVEN
with Automatic Timer and Recipe Guide
Can cut cooking time from hours to minutes!

Now Only **\$319.95**

HEYDLAUFF'S
113 N. Main St., Chelsea
Phone 475-1221



Real Estate

By PAUL FRISINGER

REALTOR

DON'T UNDERESTIMATE BUYER

In the arena of real estate transactions — there are two parties to every transaction — a buyer and seller. Some sellers have the mistaken impression that they are at a financial advantage when negotiating directly with a prospective buyer. Unfortunately, they couldn't be more mistaken!

Never underestimate the hard financial bargaining ability of the average buyer. Spend one day in the field with any Realtor, negotiating and handling offers and counter-offers and you'll appreciate what I'm saying. Frankly, if the typical buyer knows you are not selling through a Realtor, right off the bat he'll expect you to deduct the commission for his benefit before you even START serious negotiations.

Then you're on your own, possibly at a great disadvantage, in the intricate areas of financing, negotiating, and protecting yourself from all sorts of do-it-yourself pitfalls. You've got a lot invested in your home. It makes sense to list it with a Realtor. He'll sell it for you — without hitches, for the best price and in the shortest amount of time.

If there is anything we can do to help you in the field of real estate, please phone or drop in at FRISINGER REALTY CO., 935 S. Main St., Chelsea, Mich. Phone: 475-8681. We're here to help!

Biddy Cager Team Assignments Slated

Some 180 Chelsea biddy basketball players will be assigned to their respective teams during regular practice sessions this Saturday, Dec. 18, following initial division according to age, into one of three biddy basketball leagues.

The three leagues are NBA for ages 11 through 12; ABA for ages 9 through 10; and WBA for ages 7 through 8. Because all three leagues will be playing at Beach Middle school gymnasium this season, each league will have its own separate time block on reserve.

Beginning Dec. 18, players are asked to arrive and depart at the Beach school courts as specified by the following schedule: WBA, starts 9 a.m., finishes 10:20 a.m.; ABA, starts 10:25 a.m., finishes 11:55 a.m.; and NBA, starts 11:55 a.m., finishes 12:55 p.m.

Because of the large number of participants, all players will be required to leave the gym at the end of their respective time blocks. Parents are urged to impress upon their children the importance of arriving and leaving on time so the biddy basketball program can run smoothly.

BIDDY BASKETBALL SCHEDULE — 1976-77

Dec. 18—Team practice.
Dec. 25—Off.
Jan. 1—Off.
Jan. 8—Games.
Jan. 16—Games.
Jan. 22—Games.
Feb. 5—Games.
Feb. 12—Games.
Feb. 19—Games.
Feb. 26—Games.
March 5—Games.
March 12—Activity day.

Spaulding for Children Plans Christmas Party

A traditional countryside Christmas atmosphere will backdrop this year's annual Spaulding for Children Christmas Party to be held Saturday, Dec. 18, 2 to 4 p.m. at the Spaulding farm on Waltrous Rd.

The party, sponsored by the specialized adoption agency for "hard to place" children, is planned as "a very happy affair, exciting in terms of the real spirit of Christmas," said Kathleen Cavanagh, spokesperson for Spaulding for Children.

Two Area Students Granted Degrees At Michigan State

Two area students are listed among the 1,629 candidates for degrees at Michigan State University. Degrees were awarded at fall commencement exercises Saturday, Dec. 4, in the MSU Auditorium.

The two are Bonnie J. Powers of 12330 Scio Church Rd., Chelsea, recipient of a BS degree in agriculture and natural resources, and communications; and Scott P. Eisele of 211 Beaufort St., Manchester, recipient of a BS degree in industrial arts.

The commencement address for undergraduate degree recipients was delivered by former U. S. Congresswoman Martha Griffiths, sponsor of the Equal Rights Amendment to the Constitution. Awarded an honorary doctor of laws degree from MSU in 1968, when she spoke at MSU's winter term commencement.

Attending the event will be an estimated 100 Michigan area children and their families. The youngsters represent all those placed in homes by Spaulding since the agency first began its operations in 1968.

Making a special guest appearance will be Santa Claus, who will distribute gifts donated by individuals and community groups from throughout the Chelsea area. A highlight of the occasion will be the annual trimming of Spaulding's Christmas tree by those children attending the party.

Among the special adult guests will be Warren Spaulding, life-long Chelsea resident and founder of Spaulding for Children.

Currently Spaulding for Children is involved in a national effort to establish similar adoption agencies throughout the country in each of 10 or 12 Health, Education and Welfare (HEW) regions. This effort is being subsidized by a grant from the Clark Foundation and has been responsible for the establishment of seven specialized adoption agencies country-wide thus far.

THE CHELSEA STANDARD

Second Section

CHELSEA, MICHIGAN, THURSDAY, DECEMBER 16, 1976

Pages 7-14



POSTER CONTEST WINNERS: Helping to publicize the Dec. 18 Chelsea Jaycees Blood Drive throughout the Chelsea area are six posters designed by youngsters in Chelsea schools. These posters were selected from a multitude of entries in the annual Jaycees Poster Contest Monday evening, Dec. 13. Winners of the competition, pictured above with their entries, are front row, from left,

Lisa Surbaugh, 9, South school 3rd grader; Paula Colombo, 8, South school 3rd grader; Norman Weber, 8, South school 2nd grader; and Joshua Smith, 9, South school 4th grader. Back row, from left are Elaine Meyer, 13, Beach Middle school 8th grader; and Tim Rowton, 12, Beach Middle school 7th grader.

8th Grade Cagers Down Stockbridge

Chelsea 8th grade basketball team defeated Stockbridge 50-33, Monday evening. The win was their second in succession without a loss.

Carl Simpson led the Chelsea attack with 21 points (the most scored by an 8th grader in more than 10 years) followed by Jeff Dils with 13 points, Mike Wade, 6, Jon Riemschneider, 4, Jim Stock 2, Vince Salyer 2, and Scott Wilson, 2.

Jeff Dils played an outstanding defensive game forcing Stockbridge into many turnovers and personally stealing the ball eight times during the game.

Mike Wade played an outstanding game on defense and led the team in rebounding with 10.

The 8th graders' next game is Tuesday, Dec. 14 at home at 5 p.m. against Manchester.

One of three veterans pursuing a college degree part time under the GI Bill, complete their training, the Veterans Administration reported.

Special Olympics Team Wins Floor Hockey Game

On Monday, Dec. 13, Chelsea High's Special Olympics team played their floor hockey season opener against High Point, and squeaked past their evenly matched rivals for the 9-8 victory.

"The game was very close and very exciting the entire three periods," said Coach Nancy Oswald following Monday's contest.

Scoring three goals for Chelsea was Steve Lawrence. Also scoring were Leonard Carlson, 2; Glenn Passow, 2; Matt Schmidt, 1; and Chris Williams, 1.

"Playing good defense for the Bulldogs were Kathy Young, Sue Armstrong, Lori Brown, Linda Alber, Theresa Murphy, and Ryan Sweeney. "Sweeney was especially outstanding," coach Oswald emphasized.

During the course of the match, goals were switched twice. Replacing starter Steve Lawrence was Kathy Buck, who was replaced in turn by Patty Brady.

Scoring for High Point were Lorraine Martel, 1; Russell Sellers, 3; and Mike Gobel, 4. Tending the goal for High Point was Larry

Kinesin. High Point's team is coached by Doug Cooper, Wash-tenaw County Director of Special Olympics.

"The match was a scrimmage in preparation for the Special Olympics Tournament Thursday (today), Dec. 16, which will be held at High Point beginning 10 a.m." Coach Oswald stated. Five schools are entered in the tournament including Dexter, High Point, St. Louis school, Chelsea, and Community Mental Health. "But, Chelsea hopes to take the trophy home," she concluded.

Michigan State University will soon have a CAT (computerized axial tomography) body scanner in its new Clinical Center by mid 1977. One of today's most sophisticated diagnostic tools, the CAT scanner combines computer technology with that of TV and pattern recognition to create cross-sectional pictures of the human body.

Electronics Club Forming Next Tuesday

An organizational meeting to form a local communications and electronics club for the Chelsea area will be held Tuesday, Dec. 21, 7:30 p.m. in the Village Municipal Building basement. The meeting is open to anyone interested in radio communications, ham and CB, and electronics in general.

With the successful completion of the class in novice amateur radio instruction, under sponsorship of the Chelsea Recreation Council, it was decided to further promote interest and activity in radio and electronics by forming a local club.

Main topic of this initial meeting will be club organization, meeting schedule, selection of officers, and rule design. The only requirement for membership is an interest in the field. Program plans will be dependent upon the desires and interests of members.

Some radio gear is already available, and hopefully a local amateur radio station for club members may be activated in the near future.

Telephone Your Club News To 475-1371.

(Continued on page 12)

RICK'S MARKET

20490 M-52

"The Store with the Spartan on the Door"

Phone 475-2898

SCOTT CUT-RITE

WAX PAPER

122.9 Sq. Ft. Roll

53¢

RALSTON - PURINA

Wheat & Corn Chex Cereal

22-Oz. and 16-Oz. Box

89¢

50-LB. BALE

PURINA

DOG CHOW

25-Lb. Bags

\$10.75

PURINA

CAT CHOW

10-Lb. Bag

\$3.55

16-OZ. RETURNABLE BOTTLES

COCA-COLA 8 pac 99¢

DISHWASHER ALL 35-Oz. Box 92¢

RICK'S HOT BREAD DAILY

Weekdays by 3:30 p.m. Sat. & Sun., by 10:30 a.m.

(QUANTITY RIGHTS RESERVED)

HOLIDAY SPECIALS

12-OZ. CANS

FROSTIE ORANGE GRAPE

7-UP (Reg. or Diet) Hawaiian Punch

6 pac 99¢

FRITO-LAY

POTATO CHIPS

8 1/2-Oz. Bag

59¢

ALL FLAVORS KEEBLER

SNACK CRACKERS

9-Oz. Box

55¢

KEEBLER

VANILLA WAFERS

12-Oz. Box

51¢

FRITO-LAY

CORN CHIPS

12-Oz. Bag

59¢

POST

GRAPE-NUTS CEREAL

24-Oz. Box

95¢

HOOVER HOLIDAY VALUE



NEW improved HOOVER CONVERTIBLE

Now 40% more effective

Hoover has beefed up this motor, brush and agitator speed to improve the beat, sweep, cleaning action. Features for feature there isn't a better cleaner for the money.

SALE

Our buyers have taken advantage of a very special Hoover offer to bring you these Hoover uprights at SPECIAL HOLIDAY PRICES.

Choose from several models of Hoover convertible cleaners and

SAVE!

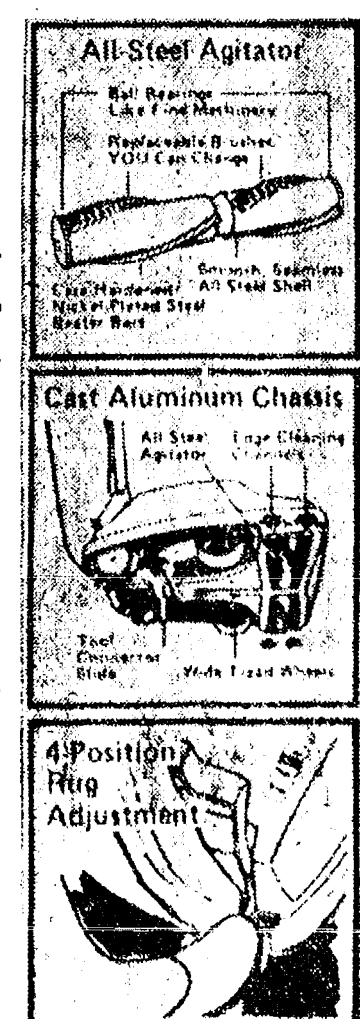
Hoover Canisters, Dial-A-Matics and Portapowers also SALE PRICED

Priced from \$49.95 and up

INSIST ON HOOVER!

HEYDLAUFF'S

113 N. Main St., Chelsea Phone 475-1221



SPECIALLY PRICED TOOL SETS TO FIT ALL CONVERTIBLES

LITTLE WANT ADS! BIG PLUSES FOR BIG RESULTS!

JUST PHONE
475-1371

WANT ADS

- YOUNG -

We list and sell lake, country and town properties. Eugene Young, Real Estate & Builder, 878-3792, 1506 Dexter-Pinckney Rd., Pinckney 48169. x34tf

CAR & TRUCK LEASING. For details see Lyle Chriswell at Palmer Motor Sales, 475-1301. 491f

R. L. BAUER Builders

LICENSED AND INSURED Custom Building

Houses - Garages Pole Barns Roofing - Siding Concrete Work

FREE ESTIMATES Call 475-1218

NEED A ROOF? Call Toth Building & Remodeling, (313) 498-1778. 41tf

SEE US for transit mixed concrete. Klumpp Bros. Gravel Co. Phone Chelsea 475-2530, 4920 Love and Rd., Grass Lake, Mich. x40tf

ROOMS by day, week or month. Excellent for the single man or retiree. Sylvan Hotel, Chelsea, Ph. 75-2911. x31tf

KETO USED CARS

3020 GRAND - DEXTER 426-4535

CARS BOUGHT AND SOLD x38tf

FIXED HAY for sale. Ph. 475-2010. x29

A fine selection of

New and Used Cars

or immediate delivery

Harper Pontiac Sales & Service

475-1300

Evenings, 475-1608

40tf

CARPENTER WORK - Inside or out. Mr. Coburn, 475-2893. 12tf

GAR - NETT'S

Flower & Gift Shop

Your Friendly Florist

112 E. Middle St., Chelsea

PHONE 475-1400

Funeral Flowers

Wedding Flowers

at Flowers (arranged or boxed)

Potted Flowering Plants

Green Plants - Corsages

WE DELIVER x91f

CUSTOM SEWING and alterations. Ph. after 2:30 p.m., 475-8745. 30tf

ROOFING SPECIALIST - All types of roof repairs, homes, barns, commercial. Insurance repairs. Asbestos shingles, hot built-up roofing, car-slate tile-asbestos. Awnings and porch enclosures. Call Joe Hayes for free estimates. Manchester, 428-8520. x22tf

ANTED - RN-LPN, full-time and part-time positions available. Nursing care facility. Call collect 475-851-7700 between 9 a.m. and p.m., weekdays. x20tf

WANT ADS

WEDDING STATIONERY - Prospective brides are invited to see our complete line of invitations and wedding accessories. The Chelsea Standard, 300 N. Main. Ph. 475-1371. 8tf

McCulloch

Portable Generators

Chain Saws

WE SELL SERVICE, SHARPEN AND TRADE

Chelsea Hardware

21tf

FOR REAL DOLLAR SAVINGS be sure and see us before you buy any new or used car. Palmer Motor Sales, Inc. Your Ford Dealer for over 60 years. x21tf

DON'T THROW IT AWAY - Sell it to A&K Mower Service of Chelsea. We buy, sell and repair all types of lawn mowers. We also repair all types of small gas motors; rototillers, chain saws, riding lawn mowers. You call, we haul. Free pick up and delivery. 475-2823. x40tf

EVANS JANITORIAL SERVICE has part-time positions available for the Chelsea area. Call 971-6263 after 6 p.m. 31f

Old Orchard

Furniture Refinishing

ANTIQUES RESTORED

Old finish removed from wood or metal safely and economically.

513 Old Orchard

Stockbridge, Michigan 48285

(517) 851-8713

21f

FREE TO GOOD HOME - 8-week-old kittens. Nice marking and litter trained. Ph. 475-1277 after 5 p.m. and week-ends. 25tf

CHRISTMAS GROOMING appointments now being taken by Carol's TLC for pampered pets. Reserve your appointment now. Call evenings (517) 851-8534. x28

FOR SALE - STR 7055 Sony stereo receiver. Still under warranty. \$450 new, \$225 or best offer. Must sell. Ph. 662-0524. x25tf

CLOSE-OUT SPECIAL - White and gold Nutone 54" vanity with 18" right hand drawer unit and matching 55" molded marble top with left hand off-set shell bowl. A \$350 value for only \$175. Would make an excellent Christmas gift. See at Hilltop Plumbing or Ph. 475-2949. x25tf

UPHOLSTERING AND REPAIR - Free estimates. 10% off \$10 per yard materials or more. Ph. 475-9241. x28

FAMILY OF 5 relocating to Ann Arbor area needs 3-4 bedroom home or farmhouse to rent or buy on land contract. Need room for growing children. Write P. O. Box 373 Hancock, Mich. 49930. x29

FOR SALE - 1968 Pontiac LeMans. A sharp one-owner. Palmer Motor Sales, 475-1301. x26tf

FOR SALE - Jeep CJS 4-wheel drive. A real clean one owner. Palmer Ford, 475-1301. x24tf

TIRED OF BEING ripped off by high truck-car repair bills? For an excellent job at a fair price go to W. J. Grossman Garage, 137 Park or call 475-8255. 26tf

HELP WANTED - Now taking applications for full-and part-time sales clerks. Insurance, paid vacations and other benefits. Interested parties apply at 1787 Whittaker Rd., corner Huron River Dr., Ypsilanti, Mich. 27

FOR SALE - Beautiful 2-bedroom, all furnished mobile home ready to move into. Ph. 475-1409. 26tf

FOR SALE - '68 Buick LeSabre 2-door. \$250. Ph. 475-9241. x28

WANT ADS

CUSTOM BUILDING

LICENSED & INSURED

FREE ESTIMATES

-Garages

-Remodeling - Additions

-Aluminum Siding

-Roofing

-Masonry Work, fireplaces, block work, patios, etc.

Homes, factories, warehouses

-Pole buildings

-Remodeling - Additions

-Aluminum Siding

-Roofing

-Masonry Work, fireplaces, block work, patios, etc.

SLOCUM CONTRACTORS & BUILDERS

Serving Washtenaw County

For Over 20 years

20700 OLD US-12

CHELSEA

Phone 475-8321 or 475-7611

21f

Beat High Fuel Costs

With A Stove or

Fireplace

From Chelsea Lumber

ALMOST EVERYBODY'S

DOING IT!

MAJESTIC-THULMAN Zero Clearance 36" fireplace \$290.25

SOLID CAST IRON PARLOR STOVE - 32" ht., 28 1/2 x 23 1/2 floor spread. Burns wood, charcoal or coal. \$199.95

SOLID CAST IRON COMFORT HEATER - 32" ht., 24" diameter. Burns wood, charcoal or coal. \$199.95

28" SOLID CAST IRON BEN FRANKLIN STOVE - Includes grate, boot and damper, barbecue grill and spark guard. \$189.95

"KING AUTOMATIC WOOD CIRCULATORS - Thermostatic control, up to 12 hrs. continuous heating. \$266.35

PACIFIC FIREPLACE GLASS DOOR AND FIRESCREEN - 32x28 or 32x32 \$126.00 44x28 or 44x32 \$136.49

Available in satin black, ant. brass or polished brass.

CAST IRON FIREPLACE GRATES 24" \$22.50 27" \$24.00 30" \$25.75

"MAGIC HEAT" WASTE-HEAT CIRCULATOR - Installs in the stove pipe to triple the heating capacity of any stove. \$69.95

ALL IN STOCK AT -

Chelsea Lumber Co.

Ph. 475-1391

27

FOR SALE - Ford LTD Landau demo. Near new condition. Save hundreds on this luxurious automobile. Palmer Ford, 475-1301. x23tf

HELP WANTED - RN or LPN, full-time and part-time positions available. Skilled nursing care facility. Call collect 517-851-7700 between 9 a.m. and 5 p.m. x12tf

WANTED - 14-ft. aluminum fishing boat. Ph. 475-1696, evenings. x27

FOR RENT - Second-floor unfurnished apartment. Stove, refrigerator, heat furnished. For married couple only. Available Dec. 15. Ph. 475-2018. x27

CHRISTMAS TREES - Cut your own, \$5 each. Ph. 475-7575. x27

28

190-ACRE DAIRY and crop farm in Dexter 4-bedroom home includes 1 1/2 baths, dining room and a full basement, 10 barns, 2 silos, and several outbuildings all in excellent condition. Must see!

OLDER 32.4 ACRE FARM in the Brooklyn school area for the low price of \$44,500. 3-bedroom home has 1 bath, dining room, full basement and more. 2-car garage, 58'x34' barn and outbuilding.

FOR SALE - 73 Ford Gran Torino, 2-door hardtop, 351 V-8, air, steering, brakes, vinyl roof, \$14,000. Ph. 475-7648. x27

28

OLDER HOME in the village. (158 Park Street, Chelsea.) 3 bedrooms, 1 1/2 baths, dining room, TV room. \$34,900.

28

28

28

28

28

28

28

28

28

28

28

28

28

28

28

28

28

28

28

28

28

28

WANT ADS

SEAMLESS ALUMINUM eaves-troughs, roofing, siding, and carpentry work of all kinds. Experienced installers. All work guaranteed. For free estimate, call R. D. Kleinschmidt Co., 428-8838. x31tf

TRAVEL TRAILERS - 13-ft. and up; 10x35 ft. trailers. John R. Jones Trailer Sales, Gregory, Mich. Phone 498-2855. 43tf

FOR SALE by owner, business and living space block building, 2 floors with office and apartment; zoned commercial, 134 ft. frontage, over 1 acre. Call for appointment 475-9209. x12tf

43tf

43tf

43tf

43tf

43tf

43tf

43tf

43tf

43tf

43tf

43tf

43tf

43tf

43tf

43tf

43tf

43tf

43tf

43tf

43tf

43tf

43tf

43tf

43tf

43tf

43tf

43tf

43tf

43tf

43tf

43tf

43tf

43tf

43tf

43tf

43tf

43tf

43tf

43tf

43tf

43tf

43tf

43tf

43tf

43tf

43tf

43tf

43tf

43tf

43tf

43tf

43tf

43tf

43tf

43tf

43tf

43tf

43tf

43tf

43tf

43tf

43tf

43tf

43tf

43tf

43tf

43tf

43tf

43tf

WANT ADS

BEEF - Locally corn fed. By quarter or side. Ready for your freezer. Ph. 426-4022 after 6 p.m. x42tf

WANTED - Mature, live-in housekeeper for three elderly ladies in Ypsilanti. Room and board, minimum wages. Call 485-2049. x61f

ARE YOU BUILDING your own home? Construction money available for residential homes. Marflax Corp., Ann Arbor. 665-8000. x29

43tf

43tf

43tf

43tf

43tf

43tf

43tf

43tf

43tf

43tf

43tf

43tf

43tf

43tf

43tf

43tf

43tf

43tf

43tf

43tf

43tf

43tf

43tf

43tf

43tf

43tf

43tf

43tf

43tf

43tf

43tf

43tf

WANT ADS

FOR SALE — Ward's humidifier Regular \$170, asking \$80. Good condition. Ph. 475-9119. x27

FOR SALE — '69 Olds Cutlass convertible, V-8, p.b., auto. Trans. \$750 or best offer. Call 475-7022 after 4 p.m. x27

FOR SALE — Slant 6, '76 Dodge 16-ton pick-up. Good condition. Asking \$850. Call 683-6379. x27

FOR RENT — Lovely unfurnished 3-bedroom country home. Chelsea schools. \$300. Ph. 683-9750. x27

CHRISTMAS GIFTS — Give a puppy, six weeks, cute black and white, all males. Ph. 475-1015. x27

FREERZER BEEF — 2 steers, by side or whole. 75c lb. hanging. 475-1015. x27

FOR RENT — 3-bedroom house in Stockbridge. \$225 per mo. Ph. 475-2808, or 475-8628. x31

Special of the Week

1976 BUICK CENTURY
Custom 4-dr. Sedan
Air Cond., 4,400 Miles
\$4795

USED CARS

1973 BUICK Century Regal 2-dr. hardtop, air cond., 32,000 miles. \$2995

1973 OLDS 88 LS 4-dr. hardtop, air cond. \$2895

1973 CHRYSLER Newport 4-dr. sedan, air cond. \$1895

1972 OLDS Custom Cruiser Wagon, 2-seat, air cond., 43,000 miles. \$2195

1972 OLDS Delta 38 4-dr. sedan, air cond., 45,000 miles. \$1995

1972 OLDS 98 LS 2-dr. hardtop, air cond. \$1995

1971 OLDS 98 LS 4-dr. hardtop, air cond. \$1995

HOURS

Tues., Wed., Fri. 8:00-5:30
Mon., Thurs. 8:00-9:00
Closed Saturdays

SPRAGUE

Buick-Olds-Opel, Inc.
1500 S. Main St., Chelsea
Ph. 475-8664

CHRISTMAS DUCKS for sale. Ph. 475-2628. x28

ASHLEY WOOD STOVES for sale. Hackney Hardware, Dexter. 426-4009. x27

FOR SALE — 1973 Ford Gran Torino station wagon. Automatic, power steering. Excellent car for the family. Palmer Ford, 475-1011. x27

GIVE HAND-MADE GIFTS this Christmas. Agate necklaces, plus bracelets, earrings, belt buckles, bolo ties and clocks. 202 W. Main St., Chelsea. Phone 475-8587. x27

MEET GEORGE VANDEMON on TV, Channel 2, Sunday morning, 10:30. x27

FOR SALE — 1973 Ranchero, the gentleman's truck. Call for the right for the wife. Palmer Ford, 475-1301. x26

CEDAR RUSTICS — A unique, useful gift. Give a Cedar Rustics log picnic table or lawn swing. Christmas or spring delivery. Ph. 426-3416. x27

FLUFFY, soft and bright are carpets cleaned with Blue Lustre. Rent electric shampooer, \$1. Chelsea Hardware. x27

WANTED — Apartment in Chelsea area for family of three. Ph. 475-8038. x28

LOST — St. Bernard dog in Wexner Rd. area. Reward. Ph. 475-2764. x27

Cards of Thanks

CARD OF THANKS
We wish to thank the members of the First Congregational Church of Chelsea for their prayers, thoughts, and flowers while our daughter, Amanda, was hospitalized. Our deepest appreciation is all of you.
Fred, Linda, Sammy and Amanda Nimke.

Legal Notices

MORTGAGE SALE
Default having been made in the terms and conditions of a certain mortgage made by Kathleen A. Williams of Ypsilanti, Michigan, to Lumberchick Realty Company, a Michigan Corporation, Mortgagee, dated the 28th day of March, A.D. 1976, and recorded in the office of the Register of Deeds for the County of Washtenaw and State of Michigan, on page 128, on which mortgage there is claimed to be due, at the date of this notice, the principal and interest, the sum of Twenty Thousand Two Hundred Eighty and 72/100 Dollars (\$21,287.72).

And no suit or proceedings at law or in equity having been instituted to recover the debt secured by said mortgage or any part thereof. Now, therefore, by virtue of the power of sale contained in said mortgage, and pursuant to the statute of the State of Michigan in such case made and provided, notice is hereby given that on Thursday, the 23rd day of December, A.D. 1976, at 10:00 o'clock a.m., foreclosure sale will be held by the highest bidder immediately inside the Western entrance to the Washtenaw County Building, in the City of Ann Arbor, Washtenaw County, Michigan, of the premises described in said mortgage, or so much thereof as may be necessary to pay the amount due as aforesaid, on said mortgage, with the interest thereon at Eight per cent (8%) per annum and all legal costs, charges and expenses, including the attorney fees allowed by law, and also any sum or sums which may be paid by the undersigned, necessary to protect its interest in the premises. Which said premises are described as follows: All that certain piece of land situated in the Township of Ypsilanti in the County of Washtenaw and State of Michigan and described as follows, to-wit:

Unit 138, Building 35, Wingate Park Condominium according to Master Deed recorded in Liber 1461, Page 535, Washtenaw County Records, and designated as Washtenaw Condominium Subdivision Plan 23, together with rights in general common elements and limited common elements as set forth in Master Deed and as described in Act 228 of the Public Acts of 1965 as amended.

The redemption period shall be six months from the date of sale.

Dated, November 18, 1976.

James S. Golanitz, Attorney for Mortgagee, 370 City National Bank Building, Detroit, Michigan 48226.

Nov. 18-25-Dec. 2-9-16

STATE OF MICHIGAN
In the Circuit Court for the County of Washtenaw.

Patrick J. Conlin (Plaintiff) vs. WILLIAM TERRY CHANDLER, Defendant.

Case No. 1976-11295

On the 5th day of November, 1976, an action was commenced in the Circuit Court of the County of Washtenaw, Michigan, by Plaintiff, WILLIAM TERRY CHANDLER, against Defendant, JANET CHANDLER.

It is HEREBY ORDERED that the Defendant, JANET CHANDLER, shall answer the Complaint of Plaintiff, WILLIAM TERRY CHANDLER, on or before the 5th day of February, 1977.

Failure to comply with this order will result in a default being entered against such Defendant for the relief demanded in the Complaint filed in this case.

Patrick J. Conlin (Plaintiff) vs. JANET CHANDLER, Defendant.

Case No. 1976-11296

On the 5th day of November, 1976, an action was commenced in the Circuit Court of the County of Washtenaw, Michigan, by Plaintiff, WILLIAM TERRY CHANDLER, against Defendant, JANET CHANDLER.

It is HEREBY ORDERED that the Defendant, JANET CHANDLER, shall answer the Complaint of Plaintiff, WILLIAM TERRY CHANDLER, on or before the 5th day of February, 1977.

Failure to comply with this order will result in a default being entered against such Defendant for the relief demanded in the Complaint filed in this case.

Patrick J. Conlin (Plaintiff) vs. JANET CHANDLER, Defendant.

Case No. 1976-11297

On the 5th day of November, 1976, an action was commenced in the Circuit Court of the County of Washtenaw, Michigan, by Plaintiff, WILLIAM TERRY CHANDLER, against Defendant, JANET CHANDLER.

It is HEREBY ORDERED that the Defendant, JANET CHANDLER, shall answer the Complaint of Plaintiff, WILLIAM TERRY CHANDLER, on or before the 5th day of February, 1977.

Failure to comply with this order will result in a default being entered against such Defendant for the relief demanded in the Complaint filed in this case.

Patrick J. Conlin (Plaintiff) vs. JANET CHANDLER, Defendant.

Case No. 1976-11298

On the 5th day of November, 1976, an action was commenced in the Circuit Court of the County of Washtenaw, Michigan, by Plaintiff, WILLIAM TERRY CHANDLER, against Defendant, JANET CHANDLER.

It is HEREBY ORDERED that the Defendant, JANET CHANDLER, shall answer the Complaint of Plaintiff, WILLIAM TERRY CHANDLER, on or before the 5th day of February, 1977.

Failure to comply with this order will result in a default being entered against such Defendant for the relief demanded in the Complaint filed in this case.

Patrick J. Conlin (Plaintiff) vs. JANET CHANDLER, Defendant.

Case No. 1976-11299

On the 5th day of November, 1976, an action was commenced in the Circuit Court of the County of Washtenaw, Michigan, by Plaintiff, WILLIAM TERRY CHANDLER, against Defendant, JANET CHANDLER.

It is HEREBY ORDERED that the Defendant, JANET CHANDLER, shall answer the Complaint of Plaintiff, WILLIAM TERRY CHANDLER, on or before the 5th day of February, 1977.

Failure to comply with this order will result in a default being entered against such Defendant for the relief demanded in the Complaint filed in this case.

Patrick J. Conlin (Plaintiff) vs. JANET CHANDLER, Defendant.

Case No. 1976-11300

On the 5th day of November, 1976, an action was commenced in the Circuit Court of the County of Washtenaw, Michigan, by Plaintiff, WILLIAM TERRY CHANDLER, against Defendant, JANET CHANDLER.

It is HEREBY ORDERED that the Defendant, JANET CHANDLER, shall answer the Complaint of Plaintiff, WILLIAM TERRY CHANDLER, on or before the 5th day of February, 1977.

Failure to comply with this order will result in a default being entered against such Defendant for the relief demanded in the Complaint filed in this case.

Patrick J. Conlin (Plaintiff) vs. JANET CHANDLER, Defendant.

Case No. 1976-11301

On the 5th day of November, 1976, an action was commenced in the Circuit Court of the County of Washtenaw, Michigan, by Plaintiff, WILLIAM TERRY CHANDLER, against Defendant, JANET CHANDLER.

It is HEREBY ORDERED that the Defendant, JANET CHANDLER, shall answer the Complaint of Plaintiff, WILLIAM TERRY CHANDLER, on or before the 5th day of February, 1977.

Failure to comply with this order will result in a default being entered against such Defendant for the relief demanded in the Complaint filed in this case.

Patrick J. Conlin (Plaintiff) vs. JANET CHANDLER, Defendant.

Case No. 1976-11302

On the 5th day of November, 1976, an action was commenced in the Circuit Court of the County of Washtenaw, Michigan, by Plaintiff, WILLIAM TERRY CHANDLER, against Defendant, JANET CHANDLER.

It is HEREBY ORDERED that the Defendant, JANET CHANDLER, shall answer the Complaint of Plaintiff, WILLIAM TERRY CHANDLER, on or before the 5th day of February, 1977.

Failure to comply with this order will result in a default being entered against such Defendant for the relief demanded in the Complaint filed in this case.

Patrick J. Conlin (Plaintiff) vs. JANET CHANDLER, Defendant.

Case No. 1976-11303

On the 5th day of November, 1976, an action was commenced in the Circuit Court of the County of Washtenaw, Michigan, by Plaintiff, WILLIAM TERRY CHANDLER, against Defendant, JANET CHANDLER.

It is HEREBY ORDERED that the Defendant, JANET CHANDLER, shall answer the Complaint of Plaintiff, WILLIAM TERRY CHANDLER, on or before the 5th day of February, 1977.

Failure to comply with this order will result in a default being entered against such Defendant for the relief demanded in the Complaint filed in this case.

Patrick J. Conlin (Plaintiff) vs. JANET CHANDLER, Defendant.

Case No. 1976-11304

On the 5th day of November, 1976, an action was commenced in the Circuit Court of the County of Washtenaw, Michigan, by Plaintiff, WILLIAM TERRY CHANDLER, against Defendant, JANET CHANDLER.

It is HEREBY ORDERED that the Defendant, JANET CHANDLER, shall answer the Complaint of Plaintiff, WILLIAM TERRY CHANDLER, on or before the 5th day of February, 1977.

Failure to comply with this order will result in a default being entered against such Defendant for the relief demanded in the Complaint filed in this case.

Patrick J. Conlin (Plaintiff) vs. JANET CHANDLER, Defendant.

Case No. 1976-11305

On the 5th day of November, 1976, an action was commenced in the Circuit Court of the County of Washtenaw, Michigan, by Plaintiff, WILLIAM TERRY CHANDLER, against Defendant, JANET CHANDLER.

It is HEREBY ORDERED that the Defendant, JANET CHANDLER, shall answer the Complaint of Plaintiff, WILLIAM TERRY CHANDLER, on or before the 5th day of February, 1977.

Failure to comply with this order will result in a default being entered against such Defendant for the relief demanded in the Complaint filed in this case.

of Part of the Northeast 1/4 of Section 12, Township 36 North, Range 7 East, Ypsilanti Township, Washtenaw County, Michigan, recorded in Liber 1461, Page 535, Washtenaw County Records.

Continuously known as: 3170 Morris Road. On or before the 23rd day of December, 1976, the property may be redeemed.

Dated at Lathrup Village, Michigan November 23, 1976.

Ridgewood Savings Bank Assignee of Mortgagee.

James H. Schubert, P.C. Attorney for Assignee of Mortgagee. Nov. 23-Dec. 2-9-16-2

MORTGAGE SALE
Default having been made in the terms and conditions of a certain mortgage made by JOSEPH J. BUSH, his wife, of Ann Arbor, Washtenaw County, Michigan, to WAYNE FEDERAL SAVINGS AND LOAN ASSOCIATION, a Federal National Mortgage Association, dated the 28th day of March, A.D. 1976, and recorded in the office of the Register of Deeds for the County of Washtenaw and State of Michigan, on page 98, on which mortgage there is claimed to be due, at the date of this notice, the principal and interest, the sum of Nineteen Thousand Five Hundred Seventy-One and 70/100 Dollars (\$19,571.70).

No suit or proceedings at law or in equity having been instituted to recover the debt secured by said mortgage or any part thereof. Now, therefore, by virtue of the power of sale contained in said mortgage, and pursuant to the statute of the State of Michigan in such case made and provided, notice is hereby given that on Thursday, the 23rd day of December, A.D. 1976, at 10:00 o'clock a.m., local time, said mortgage will be foreclosed by a sale at public auction to the highest bidder, at the west entrance of the Washtenaw County Building in the City of Ann Arbor, Washtenaw County, Michigan, of the premises described in said mortgage, or so much thereof as may be necessary to pay the amount due as aforesaid, on said mortgage, with the interest thereon at Seven per cent (7%) per annum and all legal costs, charges and expenses, including the attorney fees allowed by law, and also any sum or sums which may be paid by the undersigned, necessary to protect its interest in the premises. Which said premises are described as follows: All that certain piece of land situated in the Township of Ypsilanti in the County of Washtenaw and State of Michigan and described as follows, to-wit:

Lot 3, 30th Street, a Subdivision of the East, recorded in the office of the Register of Deeds for the County of Washtenaw and State of Michigan, on page 690, which mortgage was thereafter on, to-wit: the 21st day of July, A.D. 1974, and recorded in the office of the Register of Deeds for the County of Washtenaw and State of Michigan, on page 721, on which mortgage there is claimed to be due, at the date of this notice, the principal and interest, the sum of Twenty Thousand Seven Hundred Seventy and 90/100 Dollars (\$20,770.90).

And no suit or proceedings at law or in equity having been instituted to recover the debt secured by said mortgage or any part thereof. Now, therefore, by virtue of the power of sale contained in said mortgage, and pursuant to the statute of the State of Michigan in such case made and provided, notice is hereby given that on Thursday, the 23rd day of December, A.D. 1976, at 10:00 o'clock a.m., local time, said mortgage will be foreclosed by a sale at public auction to the highest bidder, at the west entrance of the Washtenaw County Building in the City of Ann Arbor, Washtenaw County, Michigan, of the premises described in said mortgage, or so much thereof as may be necessary to pay the amount due as aforesaid, on said mortgage, with the interest thereon at Eight per cent (8%) per annum and all legal costs, charges and expenses, including the attorney fees allowed by law, and also any sum or sums which may be paid by the undersigned, necessary to protect its interest in the premises. Which said premises are described as follows: All that certain piece of land situated in the Township of Ypsilanti in the County of Washtenaw and State of Michigan and described as follows, to-wit:

Unit 138, Building 35, Wingate Park Condominium according to Master Deed recorded in Liber 1461, Page 535, Washtenaw County Records, and designated as Washtenaw Condominium Subdivision Plan 23, together with rights in general common elements and limited common elements as set forth in Master Deed and as described in Act 228 of the Public Acts of 1965 as amended.

The redemption period shall be six months from the date of sale.

Dated, November 18, 1976.

James S. Golanitz, Attorney for Mortgagee, 370 City National Bank Building, Detroit, Michigan 48226.

Nov. 18-25-Dec. 2-9-16

MORTGAGE SALE
Default having been made in the terms and conditions of a certain mortgage made by EUGENE N. HUGHES, his wife, of Ann Arbor, Washtenaw County, Michigan, to WAYNE FEDERAL SAVINGS AND LOAN ASSOCIATION, a Federal National Mortgage Association, dated the 28th day of March, A.D. 1976, and recorded in the office of the Register of Deeds for the County of Washtenaw and State of Michigan, on page 98, on which mortgage there is claimed to be due, at the date of this notice, the principal and interest, the sum of Nineteen Thousand Five Hundred Seventy-One and 70/100 Dollars (\$19,571.70).

No suit or proceedings at law or in equity having been instituted to recover the debt secured by said mortgage or any part thereof. Now, therefore, by virtue of the power of sale contained in said mortgage, and pursuant to the statute of the State of Michigan in such case made and provided, notice is hereby given that on Thursday, the 23rd day of December, A.D. 1976, at 10:00 o'clock a.m., local time, said mortgage will be foreclosed by a sale at public auction to the highest bidder, at the west entrance of the Washtenaw County Building in the City of Ann Arbor, Washtenaw County, Michigan, of the premises described in said mortgage, or so much thereof as may be necessary to pay the amount due as aforesaid, on said mortgage, with the interest thereon at Seven per cent (7%) per annum and all legal costs, charges and expenses, including the attorney fees allowed by law, and also any sum or sums which may be paid by the undersigned, necessary to protect its interest in the premises. Which said premises are described as follows: All that certain piece of land situated in the Township of Ypsilanti in the County of Washtenaw and State of Michigan and described as follows, to-wit:

Lot 3, 30th Street, a Subdivision of the East, recorded in the office of the Register of Deeds for the County of Washtenaw and State of Michigan, on page 690, which mortgage was thereafter on, to-wit: the 21st day of July, A.D. 1974, and recorded in the office of the Register of Deeds for the County of Washtenaw and State of Michigan, on page 721, on which mortgage there is claimed to be due, at the date of this notice, the principal and interest, the sum of Twenty Thousand Seven Hundred Seventy and 90/100 Dollars (\$20,770.90).

And no suit or proceedings at law or in equity having been instituted to recover the debt secured by said mortgage or any part thereof. Now, therefore, by virtue of the power of sale contained in said mortgage, and pursuant to the statute of the State of Michigan in such case made and provided, notice is hereby given that on Thursday, the 23rd day of December, A.D. 1976, at 10:00 o'clock a.m., local time, said mortgage will be foreclosed by a sale at public auction to the highest bidder, at the west entrance of the Washtenaw County Building in the City of Ann Arbor, Washtenaw County, Michigan, of the premises described in said mortgage, or so much thereof as may be necessary to pay the amount due as aforesaid, on said mortgage, with the interest thereon at Eight per cent (8%) per annum and all legal costs, charges and expenses, including the attorney fees allowed by law, and also any sum or sums which may be paid by the undersigned, necessary to protect its interest in the premises. Which said premises are described as follows: All that certain piece of land situated in the Township of Ypsilanti in the County of Washtenaw and State of Michigan and described as follows, to-wit:

Unit 138, Building 35, Wingate Park Condominium according to Master Deed recorded in Liber 1461, Page 535, Washtenaw County Records, and designated as Washtenaw Condominium Subdivision Plan 23, together with rights in general common elements and limited common elements as set forth in Master Deed and as described in Act 228 of the Public Acts of 1965 as amended.

The redemption period shall be six months from the date of sale.

Dated, November 18, 1976.

James S. Golanitz, Attorney for Mortgagee, 370 City National Bank Building, Detroit, Michigan 48226.

Nov. 18-25-Dec. 2-9-16

MORTGAGE SALE
Default having been made in the terms and conditions of a certain mortgage made by EUGENE N. HUGHES, his wife, of Ann Arbor, Washtenaw County, Michigan, to WAYNE FEDERAL SAVINGS AND LOAN ASSOCIATION, a Federal National Mortgage Association, dated the 28th day of March, A.D. 1976, and recorded in the office of the Register of Deeds for the County of Washtenaw and State of Michigan, on page 98, on which mortgage there is claimed to be due, at the date of this notice, the principal and interest, the sum of Nineteen Thousand Five Hundred Seventy-One and 70/100 Dollars (\$19,571.70).

No suit or proceedings at law or in equity having been instituted to recover the debt secured by said mortgage or any part thereof. Now, therefore, by virtue of the power of sale contained in said mortgage, and pursuant to the statute of the State of Michigan in such case made and provided, notice is hereby given that on Thursday, the 23rd day of December, A.D. 1976, at 10:00 o'clock a.m., local time, said mortgage will be foreclosed by a sale at public auction to the highest bidder, at the west entrance of the Washtenaw County Building in the City of Ann Arbor, Washtenaw County, Michigan, of the premises described in said mortgage, or so much thereof as may be necessary to pay the amount due as aforesaid, on said mortgage, with the interest thereon at Seven per cent (7%) per annum and all legal costs, charges and expenses, including the attorney fees allowed by law, and also any sum or sums which may be paid by the undersigned, necessary to protect its interest in the premises. Which said premises are described as follows: All that certain piece of land situated in the Township of Ypsilanti in the County of Washtenaw and State of Michigan and described as follows, to-wit:

Lot 3, 30th Street, a Subdivision of the East, recorded in the office of the Register of Deeds for the County of Washtenaw and State of Michigan, on page 690, which mortgage was thereafter on, to-wit: the 21st day of July, A.D. 1974, and recorded in the office of the Register of Deeds for the County of Washtenaw and State of Michigan, on page 721, on which mortgage there is claimed to be due, at the date of this notice, the principal and interest, the sum of Twenty Thousand Seven Hundred Seventy and 90/100 Dollars (\$20,770.90).

And no suit or proceedings at law or in equity having been instituted to recover the debt secured by said mortgage or any part thereof. Now, therefore, by virtue of the power of sale contained in said mortgage, and pursuant to the statute of the State of Michigan in such case made and provided, notice is hereby given that on Thursday, the 23rd day of December, A.D. 1976, at 10:00 o'clock a.m., local time, said mortgage will be foreclosed by a sale at public auction to the highest bidder, at the west entrance of the Washtenaw County Building in the City of Ann Arbor, Washtenaw County, Michigan, of the premises described in said mortgage, or so much thereof as may be necessary to pay the amount due as aforesaid, on said mortgage, with the interest thereon at Eight per cent (8%) per annum and all legal costs, charges and expenses, including the attorney fees allowed by law, and also any sum or sums which may be paid by the undersigned, necessary to protect its interest in the premises. Which said premises are described as follows: All that certain piece of land situated in the Township of Ypsilanti in the County of Washtenaw and State of Michigan and described as follows, to-wit:

Unit 138, Building 35, Wingate Park Condominium according to Master Deed recorded in Liber 1461, Page 535, Washtenaw County Records, and designated as Washtenaw Condominium Subdivision Plan 23, together with rights in general common elements and limited common elements as set forth in Master Deed and as described in Act 228 of the Public Acts of 1965 as amended.

The redemption period shall be six months from the date of sale.

Dated, November 18, 1976.

James S. Golanitz, Attorney for Mortgagee, 370 City National Bank Building, Detroit, Michigan 48226.

Nov. 18-25-Dec. 2-9-16

MORTGAGE SALE
Default having been made in the terms and conditions of a certain mortgage made by EUGENE N. HUGHES, his wife, of Ann Arbor, Washtenaw County, Michigan, to WAYNE FEDERAL SAVINGS AND LOAN ASSOCIATION, a Federal National Mortgage Association, dated the 28th day of March, A.D. 1976, and recorded in the office of the Register of Deeds for the County of Washtenaw and State of Michigan, on page 98, on which mortgage there is claimed to be due, at the date of this notice, the principal and interest, the sum of Nineteen Thousand Five Hundred Seventy-One and 70/100 Dollars (\$19,571.70).

No suit or proceedings at law or in equity having been instituted to recover the debt secured by said mortgage or any part thereof. Now, therefore, by virtue of the power of sale contained in said mortgage, and pursuant to the statute of the State of Michigan in such case made and provided, notice is hereby given that on Thursday, the 23rd day of December, A.D. 1976, at 10:00 o'clock a.m., local time, said mortgage will be foreclosed by a sale at public auction to the highest bidder, at the west entrance of the Washtenaw County Building in the City of Ann Arbor, Washtenaw County, Michigan, of the premises described in said mortgage, or so much thereof as may be necessary to pay the amount due as aforesaid, on said mortgage, with the interest thereon at Seven per cent (7%) per annum and all legal costs, charges and expenses, including the attorney fees allowed by law, and also any sum or sums which may be paid by the undersigned, necessary to protect its interest in the premises. Which said premises are described as follows: All that certain piece of land situated in the Township of Ypsilanti in the County of Washtenaw and State of Michigan and described as follows, to-wit:

Lot 3, 30th Street, a Subdivision of the East, recorded in the office of the Register of Deeds for the County of Washtenaw and State of Michigan, on page 690, which mortgage was thereafter on, to-wit: the 21st day of July, A.D. 1974, and recorded in the office of the Register of Deeds for the County of Washtenaw and State of Michigan, on page 721, on which mortgage there is claimed to be due, at the date of this notice, the principal and interest, the sum of Twenty Thousand Seven Hundred Seventy and 90/100 Dollars (\$20,770.90).

And no suit or proceedings at law or in equity having been instituted to recover the debt secured by said mortgage or any part thereof. Now, therefore, by virtue of the power of sale contained in said mortgage, and pursuant to the statute of the State of Michigan in such case made and provided, notice is hereby given that on Thursday, the 23rd day of December, A.D. 1976, at 10:00 o'clock a.m., local time, said mortgage will be foreclosed by a sale at public auction to the highest bidder, at the west entrance of the Washtenaw County Building in the City of Ann Arbor, Washtenaw County, Michigan, of the premises described in said mortgage, or so much thereof as may be necessary to pay the amount due as aforesaid, on said mortgage, with the interest thereon at Eight per cent (8%) per annum and all legal costs, charges and expenses, including the attorney fees allowed by law, and also any sum or sums which may be paid by the undersigned, necessary to protect its interest in the premises. Which said premises are described as follows: All that certain piece of land situated in the Township of Ypsilanti in the County of Washtenaw and State of Michigan and described as follows, to-wit:

Unit 138, Building 35, Wingate Park Condominium according to Master Deed recorded in Liber 1461, Page 535, Washtenaw County Records, and designated as Washtenaw Condominium Subdivision Plan 23, together with rights in general common elements and limited common elements as set forth in Master Deed and as described in Act 228 of the Public Acts of 1965 as amended.

The redemption period shall be six months from the date of sale.

Dated, November 18, 1976.

James S. Golanitz, Attorney for Mortgagee, 370 City National Bank Building, Detroit, Michigan 48226.

+ Services in Our Churches +

FIRST UNITED METHODIST CHURCH
The Rev. Marvin H. McCallum, Pastor

Saturday, Dec. 18—
8:30 p.m.—Christian Home Group at the home of Ben and Mary Lou Bowers.

Sunday, Dec. 19—
10:00 a.m.—Worship service (nursery provided). The Chancel Choir will sing "The Messiah."

10:20 a.m.—Church school, 4-year-olds through 6th graders.
11:00 a.m.—Junior high church school, coffee and punch hour.

11:10 a.m.—Senior High and adult church school.

Tuesday, Dec. 21—
9:30 a.m.—Charismatic Bible Sharing Group in the Litteral Room.

1:00 p.m.—Social Services Talk and Craft Group in the Education Building.

7:30 p.m.—Wesleyan Circle at the home of Mrs. Barbara Clark.

Friday, Dec. 24—
7:00 p.m.—Christmas Eve service.

ZION LUTHERAN CHURCH
Corner of Fletcher, Waters Rds.
The Rev. John R. Morris, Pastor

Saturday, Dec. 18—
9:00 a.m.—8th grade Youth Instruction.

10:30 a.m.—7th grade Youth Instruction.

Sunday, Dec. 19—
9:00 a.m.—Sunday school. Program practice during hour for all Christmas program participants.

10:15 a.m.—Worship. Congregational election after worship.

Monday, Dec. 20—
Choir Night, time to be announced.

FIRST UNITED PRESBYTERIAN CHURCH
Unadilla

The Rev. T. H. Liang, Pastor

Every Sunday—
9:45 a.m.—Sunday school.

11:00 a.m.—Worship service.

SALEM GROVE UNITED METHODIST CHURCH
3320 Notten Rd.

The Rev. Gerald R. Parker, Pastor

Every Sunday—
9:30 a.m.—Sunday school.

10:30 a.m.—Worship service.

CHURCH OF CHRIST
13661 Old US-12, East

Evangelist John M. Hamilton

Every Sunday—
10:00 a.m.—Church school.

11:00 a.m.—Worship service.

Nursery will be available.

6:00 p.m.—Worship service.

Every Wednesday—
7:30 p.m.—Bible study

OUR SAVIOR LUTHERAN CHURCH
1515 S. Main, Chelsea

The Rev. William H. Keller, Pastor

Saturday, Dec. 18—
10:00 a.m.—Sunday school Christmas service rehearsal begins.

Youth decorating and caroling.

Sunday, Dec. 19—
9:00 a.m.—Sunday school and Bible classes.

10:30 a.m.—Worship service, Holy Communion.

3:00 p.m.—Adult Information classes begin.

7:30 p.m.—Sunday school Christmas service.

Wednesday, Dec. 22—
No Confirmation classes.

7:30 p.m.—Choir rehearsal.

Thursday, Dec. 23—
Luke 2:1-20.

ST. JACOB EVANGELICAL LUTHERAN CHURCH
12501 Rietmiller Rd., Grass Lake

The Rev. Andrew Bloom, Pastor

Every Sunday—
9:00 a.m.—Worship service.

10:15 a.m.—Divine services.

NORTH SHARON BIBLE CHURCH
Sylvan and Washburne Rds.

The Rev. Ronald C. Purkey, Pastor

Every Sunday—
10:00 a.m.—Sunday school.

(Nursery available). Junior church classes.

11:00 a.m.—Worship service.

6:00 p.m.—Senior High Youth meeting. Youth Choir.

7:00 p.m.—Evening worship services. (Nursery available.) All services interpreted for the deaf.

Every Wednesday—
7:00 p.m.—Bible study and prayer meeting. (Nursery available.)

Bus transportation available: 428-7222.

ST. MARY CATHOLIC CHURCH
The Rev. Fr. David Philip Dupuis, Pastor

Mass Schedule:

Every Saturday—
4:00-5:00 p.m. Confession.

7:00 p.m.—Mass.

Immediately after 7 p.m. Mass, Confession.

Every Sunday (winter schedule)—
8:00 a.m., 10:00 a.m., 12:00 noon—Mass.

IMMANUEL BIBLE CHURCH
145 E. Summit St.

The Rev. LeRoy Johnson, Pastor

Every Sunday—
9:45 a.m.—Sunday school, nursery provided.

11:00 a.m.—Morning worship, nursery provided.

6:00 p.m.—Evening worship.

Every Wednesday—
7:00 p.m.—Family hour, prayer meeting, and Bible study.

CONGREGATIONAL CHURCH
(United Church of Christ)

The Rev. Carl Schwarm, Pastor

Sunday, Dec. 19—
10:30 a.m.—Worship, church school, Veterans of Cross Coffee Hour following worship, and caroling by grades five through 12.

ST. BARNABAS EPISCOPAL CHURCH
20500 Old US-12

The Rev. Fr. Jerrold F. Beaumont, B.S.P.

Every Sunday—
10:00 a.m.—Holy Communion first, third, and fifth Sundays, and 7:30 p.m. every Wednesday.

10:00 a.m.—Morning prayer. Second and fourth Sundays. Church school and nursery every Sunday.

Every Wednesday—
8:15 p.m.—Bible study and discussion groups.

First Wednesday of every month—
Bishop's Committee.

Third Thursday of every month—
Episcopal church women.

FIRST UNITED METHODIST
Parks and Territorial Rds.

The Rev. Glenn Kjellberg, Pastor

Every Sunday—
9:15 a.m.—Morning worship.

10:00 a.m.—Sunday school.

FIRST CHURCH OF CHRIST
SCIENTIST

1883 Washtenaw Ave., Ann Arbor

Every Sunday—
10:30 a.m.—Sunday school, morning service.

CHURCH OF JESUS CHRIST OF LATTER-DAY SAINTS
Meetings at

St. Barnabas Episcopal Church
20500 Old US-12

Every Sunday—
11:00 a.m.—Priesthood meeting.

12:30 p.m.—Sunday school.

ST. PAUL UNITED CHURCH OF CHRIST
The Rev. R. J. Ratzlaff, Pastor

Sunday, Dec. 19—
9:00 a.m.—Church school.

10:30 a.m.—Worship and church school.

CHELSEA BAPTIST CHURCH
377 Wilkinson St.

The Rev. James Stacey, Pastor

Every Sunday—
9:45 a.m.—Sunday school for the whole family.

11:00 a.m.—Morning worship service and children's church.

7:00 p.m.—Evening service, informal singing, sharing, study and discussion. (Nursery care provided for all services).

Home Bible Studies each week in the homes of the leaders.

Teen Ministry, Sunday at 6 p.m. and study groups during the week.



AWE AND ATTENTION DOMINATE the expressions of this sea of Chelsea children as they watch a kaleidoscope of magic tricks performed before their eyes by magician Daryl Hurst, special guest of the Chelsea Kiwanis Club at their children's Christmas Party. The event was staged in St. Paul Church Hall Monday evening. Children in the front row are toying with a set of Chinese rings in an attempt to discover the secret to linking them together without breaking the rings.

WATERLOO VILLAGE UNITED METHODIST CHURCH
818 Washington St.

The Rev. Glenn Kjellberg, Pastor

Every Sunday—
10:00 a.m.—Sunday school.

11:15 m.—Worship service.

ST. JOHN'S EVANGELICAL AND REFORMED CHURCH
(United Church of Christ)

Francisco

The Rev. Virgil King, Pastor

Every Sunday—
10:30 a.m.—Church services.

BETHEL EVANGELICAL AND REFORMED CHURCH
(United Church of Christ)

Freedom Township

The Rev. Roman A. Reineck, Pastor

Every Sunday—
10:00 a.m.—Worship service.

ST. THOMAS EVANGELICAL LUTHERAN
Ellsworth and Hanb Rds.

The Rev. Jerome Dykstra, Pastor

Every Sunday—
9:30 a.m.—Sunday school, Bible class, and Confirmation class.

10:45 a.m.—Worship services.

BAHAI FIRESIDE

Every Thursday—
8:00 p.m.—At the home of Toby Peterson, 705 S. Main St. Anyone wishing to learn about the Baha'i faith is welcome.

GREGORY BAPTIST CHURCH
The Rev. Paul White, Pastor

Every Sunday—
9:45 a.m.—Sunday school.

11:00 a.m.—Morning worship.

6:00 p.m.—Young people.

7:00 p.m.—Evening worship.

7:30 p.m.—Thursday mid-week worship service.

ST. JOHN'S UNITED CHURCH OF CHRIST
Rogers' Corners

Every Sunday—
10:30 a.m.—Worship service.

FIRST ASSEMBLY OF GOD
The Rev. Richard Coury, Pastor

Every Sunday—
9:45 a.m.—Sunday school.

11:00 a.m.—Worship service.

6:00 p.m.—Evening worship.

Every Wednesday—
7:00 p.m.—Christ's Ambassadors.

Missionettes. Bible meditation and prayer.

METHODIST HOME CHAPEL
Chaplain Ira Wood, Pastor

Every Sunday—
8:45 a.m.—Worship service.

NORTH LAKE UNITED METHODIST CHURCH
The Rev. David Stiles, Pastor

Every Sunday—
8:30 and 10:00 a.m.—Worship service.

More than 6.5 million persons have received some form of training under the current GI Bill, according to the Veterans Administration.

Almost nine of 10 veterans completing college-level training under the GI Bill have made substantial use of the training, the Veterans Administration reported.

Area Students Earn Degrees At EMU

Eight area residents were among the more than 1,100 Eastern Michigan University students to be awarded degrees during EMU's 28th Winter Commencement in Bowen Field House on the university campus last Sunday, Dec. 12.

Degree recipients from Chelsea were Elwood J. Boomus, 17376 Waterloo Rd., Bachelor of Business Administration; Jeanne A. Hasel-schwardt, 754 Book, Bachelor of Business Education; and Pamela A. Wilson, 13931 Old US-12, Bachelor of Music Education.

Those from Grass Lake included Sharon L. Lancaster, 11133 Boyce Rd., Bachelor of Science; Scott L. Miriello, 354 Clark, Bachelor of Science; and John A. William, Jr., 408 E. Michigan Ave., Bachelor of Science.

From Gregory, Ruth F. Vercher-eau, 10397 Hadley Rd., was awarded a Bachelor of Science degree.

From Pinckney, Sharon L. Kettel of 11746 Tamarina Ct. was the recipient of a Bachelor of Science degree.

The Commencement Address was delivered by William D. Ford, U.S. Representative for Michigan's 15th Congressional District.

ATTEND SEMINAR

Walter Bauer, Sr., and his family, of the Chelsea congregation of Jehovah's Witnesses, returned from a week-end seminar in Holt, where 1,540 were in attendance Dec. 11 and 12.

38 Counties Qualify for Snow Removal Funds

Lansing — Thirty-eight of Michigan's 83 counties recorded more than 80 inches of snow during the 1975-76 winter, qualifying them for annual snow-removal assistance payments from state gas and weight taxes, the State Highway Commission reported today.

The 38 will share \$1,820,742, compared to \$1,840,820 paid a year ago. It will be distributed according to a formula established by the legislature, based on accumulated depth of snowfall and number of miles of county roads. A county must record a minimum of 80 inches of accumulated snowfall to qualify.

Statistics on snowfall are provided by the U. S. Weather Bureau and Michigan Weather Service, which have one or more observation stations in each county.

The largest payment of \$115,243 goes to Houghton county, based on 211.78 inches of snowfall last winter. The second largest payment of \$114,914 goes to Marquette county, based on 138.54 inches of snowfall.

The most snowfall last winter was recorded in Keweenaw county, with 227.39 inches (19 feet), three inches more than the preceding winter. Others in the top five for snowfall were Houghton county, 211.78; Ontonagon, 208.46; Baraga, 197.32; and Alger, 188.77.

Electronics...

(Continued from page seven)

For further information contact Bill Altenberndt, 475-7938; Russ Pichlik, 475-8328; or Bill Wade, 475-8109.

Telephone Your Club News To 475-1371.

Can you afford to expand?

Hard expansion means land expansion. For the best analysis of your financial needs at a time when land prices are doubling, see your Federal Land Bank representative. Today's capital expenditures run high for expansion. That's why the Land Bank offers large amounts of capital that's truly long-term at reasonable rates. When you think expansion, think Land Bank.

Federal LAND BANK
the Farmer's Financial Friend

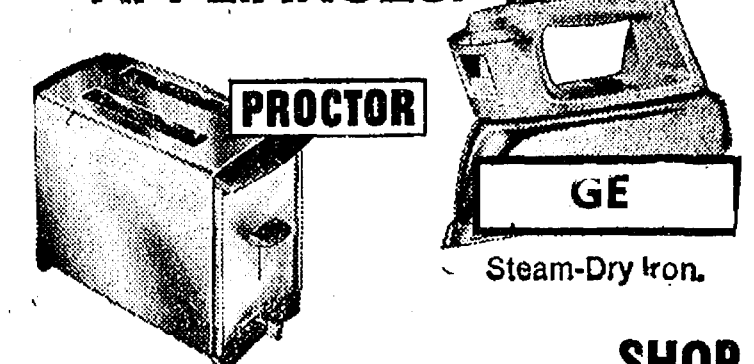
3645 Jackson Road
Ann Arbor, Mich. 48106

Phone 769-2411

GAMBLES

Christmas Gift Sale

GIANT SAVINGS ON FAMOUS NAME GIFT APPLIANCES!



SHOP NOW and SAVE

CROCK POTS As low as \$14.88

COFFEE MAKERS Starting at \$24.97

BLENDERS Priced from \$28.95

CREPE MAKERS A TV Special at \$9.95

MICROWAVE OVENS

By Magic Chef

As Low As \$199.95

The fastest, most precise cooking you've ever known!

Always Better Buys at GAMBLES
YOUR CHRISTMAS GIFT HEADQUARTERS

Looking for the
OLD FASHION CHRISTMAS SPIRIT
... Shop in Chelsea!

Stores Will Be Open 10 Nights Until 8:30 p.m.

Friendly Personnel

★
FREE GIFT WRAPPING
(in most stores)

★
Christmas Carol Playing in the Streets

★
AMPLE PARKING

★
NO WAITING IN LINES

DECEMBER 1976						
SUN.	MON.	TUES.	WED.	THURS.	FRI.	SAT.
Friendly, Courteous Service					26	27
28	29	30	1	2	3 'Til 8:30	4
5	6	7	8	9	10 'Til 8:30	11
12	13 'Til 8:30	14 'Til 8:30	15 'Til 8:30	16 'Til 8:30	17 'Til 8:30	18
19	20 'Til 8:30	21 'Til 8:30	22 'Til 8:30	23 'Til 8:30	24 'Til 6:00	25
26	27	28	29	30	31	

Santa Will Meet Us on Dec. 4 Dec. 11 Dec. 18 from 1 to 3 p.m. at 116 N. Main (Longworth Plating)

★
FREE TREATS for KIDDIES

CHELSEA BUSINESS ASSOCIATION

Wayne Dari-Blen Rations...

"New Concept" Feeds of the 70's

When a Wayne Dari-Blen ration starts working in the rumen, it keeps right on working... hours and hours longer than ordinary dairy feeds with only a single source of protein. Dari-Blens offer multiple-source protein and other key milk-producing ingredients which work together to increase the level of Volatile Fatty Acids in the rumen. This is the "secret" of Dari-Blens... the secret of top milk production.

Many dairymen want to "cash in" on the economy of non-protein nitrogen. It is this you... if you feed a medium level of milking ration, ask us about Wayne 42 Dari-Blen. It's 22 percent natural protein and 20 percent non-protein nitrogen. It's one of Wayne's NEW CONCEPT feeds of the 70's.

McCALLA FEED SERVICE

12875 Old US-12, Chelsea 475-8153



Drink More Milk



VFW Auxiliary Hears Reports on Recent Activities

A joint business and social meeting of the Ladies Auxiliary, Veterans of Foreign Wars Post No. 4070 was held Monday, Dec. 13, in the VFW Hall with 10 members in attendance. Mary Kniss reported on the success of a bazaar held Dec. 3 and 4.

Other reports followed on the VA Hospital workshop held Nov. 20, attended by Gertrude O'Dell and Betty Smith; the Veterans Day parade held in Ann Arbor, in which participating auxiliary members were Betty Smith, Bessie Sharp and Gertrude O'Dell, along with 10 Post members; and the Vote of Democracy contest held in the area high schools. Contest chairman Lucy Platt announced the winning essay in Chelsea, presented by Carolyn Schardeln, is now being judged in the Sixth District.

An invitation has been extended by the Post to the Auxiliary for a venison supper on Jan. 15, 7 p.m. Those planning to attend are requested to bring their own table service, and a dish to pass.

Norma Bevilacqua was the winning 1977 membership dues collector from the local auxiliary while Lucy Platt won the cowboy chair in a drawing for obtaining new members.

Joan Barnes reported the VFW National Home requests all varieties of trading stamps that may be converted to cash. Traverse City hospital volunteer Mary Hull has requested any glossy type or decorative picture that may be hung on walls be sent directly to her at the hospital. She has urgent need for these pictures.

Under community services, the auxiliary again assisted at the second swine flu clinic. The auxiliary voted to keep their current cancer insurance plan.

The auxiliary authorized the disbursement of \$2 for Christmas seals to the National Home. Mr. and Mrs. Byron Smith attended the Cooties Christmas Party held for the children at the National Home on Sunday, Dec. 12.

Joan Barnes received a flag from the auxiliary's Amficanism chairman, Eulalie Packard, which is to be presented to Wolverine Council - Cub Scout Den 6 Pack 312 in Pinckney.

Den leader is Mrs. Barnes, assisted by Joan Miano.

Following the business session, refreshments were served. The next regular meeting will be Jan. 10 in the VFW Hall.

Every winter a heavy snowfall is followed by deaths from heart attacks due to over-exertion. If you're over 40 and don't exercise regularly, think twice before grabbing a shovel. And if you have heart disease, don't shovel snow without your doctor's permission. For more information, contact the Michigan Heart Association.



ON THE BUTCHER-BLOCK of magician Daryl Hurst of The Magic Co., Ann Arbor, are three carrots and the wrist of Chelsea Kiwanis Club president Paul Frisinger. The earnest-faced, lip-biting Kiwanis club official volunteered to participate in a magic trick which was to leave his wrist intact while the blade on the device on the table sliced through the carrots. The demonstration took place during the annual Kiwanis Club Christmas party for area children held Monday evening in Chelsea. Has anyone noticed a one-handed realtor roaming the streets of Chelsea this week?

Waterloo Methodist Women Install

Waterloo Village United Methodist Women met at the home of Eloise Schulz Wednesday, Dec. 8, for a Christmas party and potluck dinner at noon.

The meeting was opened with a prayer recited by Mrs. Schulz, president of the group. Eight members and two guests answered roll call with Bible verse from Samuel II.

A gift was sent to McCurdy school in the southwestern United States, followed by a crafts session where the group made snowman decorations for nine area shut-ins. Christmas baskets will be filled for the shut-ins at the home of Lavin Beaman on Dec. 21.

Mrs. Ruth Kjellberg installed club officers for the new year and read Verse 4, Corinthians I. Mrs. Schulz was presented with a purple ribbon as president; Bessie Barber received a red ribbon as vice-president; Zella LeVan was given a green ribbon as treasurer; Mary Clark received a blue ribbon as secretary; Nellie Prentice was

awarded a yellow ribbon as card secretary; and Shirley Case was presented with a white ribbon as program chairman. Publicity chairman is Mary Clark.

Following the installation of officers, members recited a love poem in unison as all one body in Christ. Mrs. Schulz was given a vote of thanks for her work as president and the meeting closed with a benediction.

Next meeting of the group will be Jan. 12 at the home of Zella LeVan.

Brownies ...

TROOP 676-

Brownie Troop 676 had a Christmas party at Christina Steger's home. We went caroling on her street. One nice lady gave us each a cookie, and another lady gave us some candy. We thank them very much. Laura Ramsey, Valerie Stoker, Julie Thompson and Laura Johnston brought cookies. Tina Steger brought candy and Shari Erskine brought two Christmas tree cakes. We exchanged gifts. We wish everyone a happy Christmas and New Year.

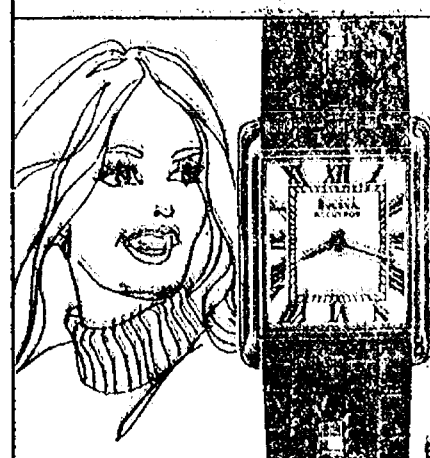
Melissa Bullard, scribe.

Silence is an undisputed virtue

For Christmas



BULOVA ACCUTRON



FROM \$75.00

The good time starts when you give a Bulova Accutron... the watch that gives proven electronic accuracy—24 hours a day—with no winding, ever.

See how handsome a dependable watch can be. Shop now while our selection is complete.

A. Showday day/date model in stainless steel with smoke tint dial. \$79.00
B. For him or her... the regal Accutron with white leather dial and 14K gold crown. \$129.00

WINANS JEWELRY

Widowed fathers can now get social security checks if they have young children in their care, just as widowed mothers have in the past.

If you get social security checks, be sure to notify the post office and social security when you change your address.

QUOTE: At an energy seminar held in East Lansing this week, Frank Zarb, Federal Energy Commissioner, was asked if he foresaw future regulation of farm energy use. The man from Washington responded, "I see no need, or reason, for the federal government to thump around in the field."

CALL OR STOP IN

CHELSEA GLASS WORKS

WORKMANSHIP AND MATERIALS FULLY GUARANTEED

Open Daily 8 a.m. to 5 p.m.; Sat., 8 a.m. to 1 p.m.

140 W. Middle, Chelsea Phone (313) 475-8667

WE REPAIR AND REPLACE:

- ★ STORE FRONTS
- ★ FURNITURE TOPS
- ★ SHOWER DOORS
- ★ THERMOPANES
- ★ AUTO GLASS - Including Windshields
- ★ MIRRORS
- ★ PATIO DOORS
- ★ TUB ENCLOSURES

Free Pick-up and delivery on auto work.

Storm Door & Window Reglazing & Screens

COMMERCIAL BUILDINGS OR RESIDENTIAL

PROMPT SERVICE

REASONABLE PRICES

Thinking CARPET? Think SCHNEIDER'S

Visit the wonderful world of carpeting at Schneider's, one of the area's finest, full-service carpet stores, conveniently located in West Ann Arbor on Wagner Road between Jackson and Liberty.

Schneider's carries a broad selection of quality, name-brand carpets at prices consistently among the lowest in the entire area. Try us.

662-9332

OPEN MON & FRI NIGHTS TIL 8:00 PM

SCHNEIDER CARPET CO. INC.

745 S. WAGNER RD., ANN ARBOR

CARPET REBIRTH

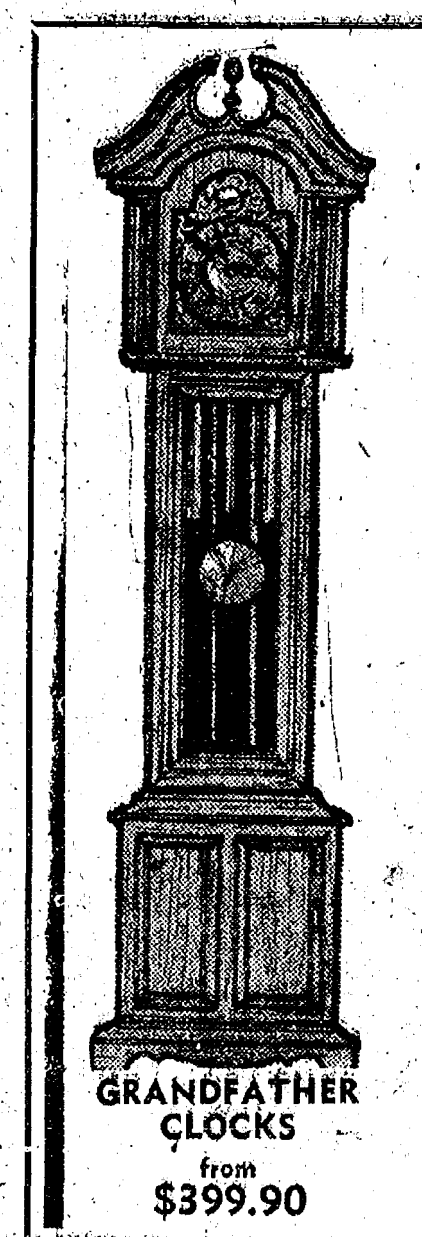
Give your carpet a new lease on life by cleaning it regularly.

JET SPRAY CARPET CLEANING

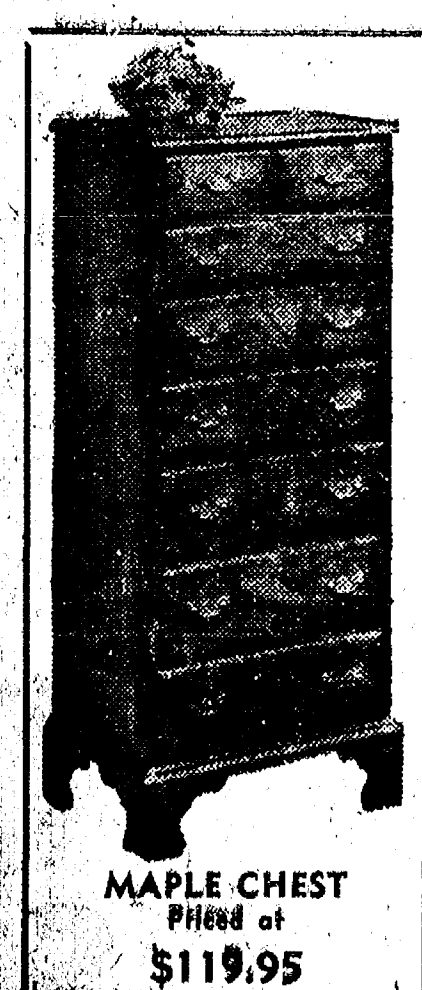
Use Your BankAmericard Phone 761-3025 or 475-1509 Ask for John Lixey.

BEWARE OF QUACK ARTHRITIS CURES

Beware of those who advertise "secret formulas" or "quick cures" for arthritis, warns the Michigan Chapter of the Arthritis Foundation. Quacks rob their victims not only of cash but also of precious time. Proper medical treatment to prevent crippling should start before it's too late to undo damage to inflamed joints.



GRANDFATHER CLOCKS from \$399.90



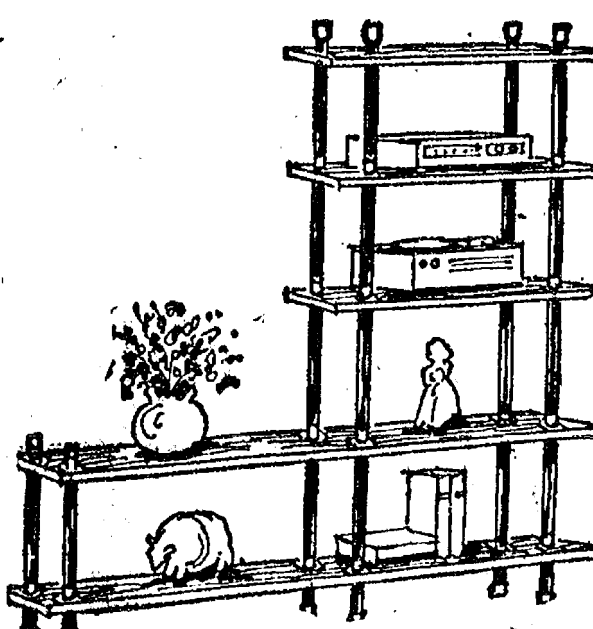
MAPLE CHEST Priced at \$119.95

GIFTS for Everyone

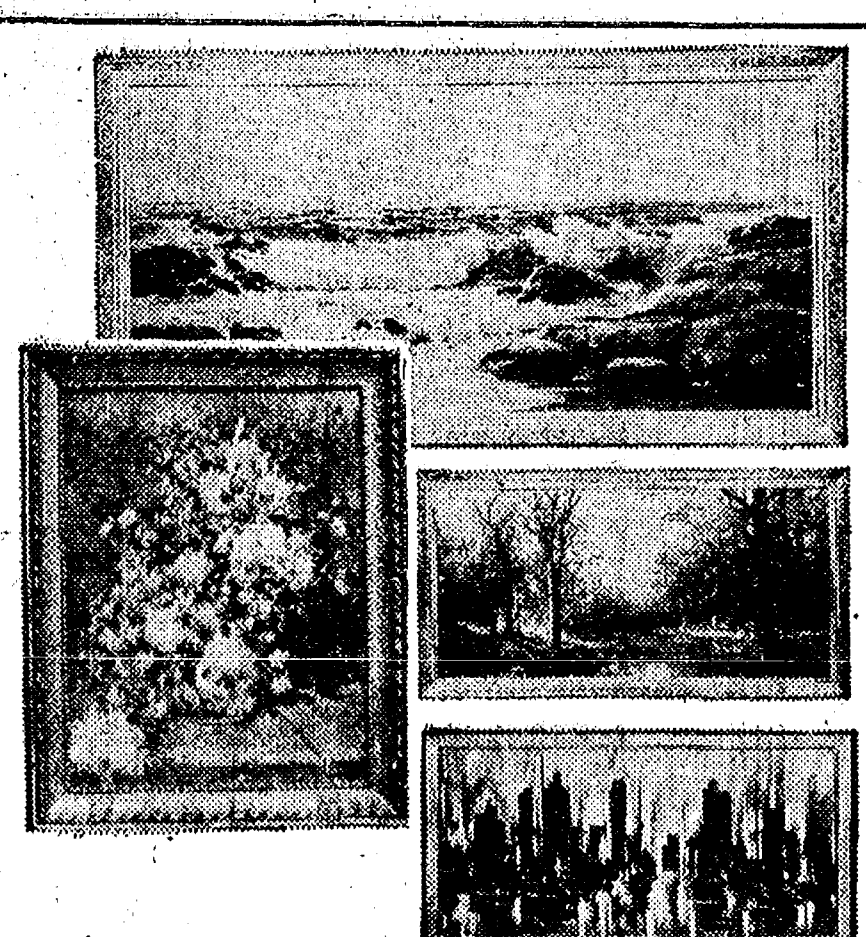


A MERKEL GIFT CERTIFICATE TAKES CARE OF THAT GIFT PROBLEM THE THOUGHTFUL WAY. GOOD IN ANY AMOUNT, ANYTIME.

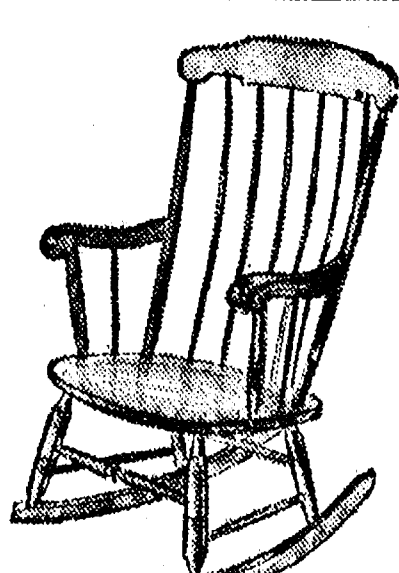
These, and many many others ...



KIRSCH SHELVING UNITS ARE EASY TO ASSEMBLE. MAPLE. From \$49 to \$169



FRAMED PICTURES IN WIDE ASSORTMENT OF INTERESTING SETTINGS AND FRAMES From \$5.95



MAPLE, PINE, WALNUT FINISHED ROCKERS Priced from \$79.95

Merkel

OPEN EVENINGS UNTIL CHRISTMAS. MAIN STREET CHELSEA. PHONE 475-8621. MASTERCARD HONORED

SPECIALS

Thurs., Fri., Sat., Only

ALL WOMEN'S NIGHTWEAR 25% Off

ALL WOMEN'S COORDINATE GROUPS 20% Off

WOMEN'S SWEATERS 10% Off

ALL MEN'S SHIRTS 20% Off

MEN'S PANATELLA 4-PC. VESTED SUITS

Reg. \$109 \$95.00

ALL HEALTH-TEX CHILDREN'S WEAR 10% OFF

DANCER'S Chelsea's Friendly Dept. Store

★ District Court Proceedings ★

Week of Dec. 3-13

Michael Powers was sentenced to pay fines and costs of \$100, to six months probation, and to five days on the probation department work program on charges of reckless driving.

Davy Cockett pled guilty to charges of transporting open intoxicants in a motor vehicle. Fines and costs, \$50.

Robert McComb pled guilty to charges of driving under the influence of liquor. He was referred to probation, to the Alcohol Safety Action Program, and will be sentenced Feb. 4.

Delmar Stanley pled guilty to charges of transporting open intoxicants in a motor vehicle. Fines and costs, \$50.

Ronald Geis was sentenced to pay fines and costs of \$100, and to pay \$71.71 restitution costs to the Village of Chelsea on charges of malicious destruction of property valued under \$100.

Ronald Geis pled guilty to charges of driving under the influence of liquor. He will be sentenced March 7.

Joseph Ford was found guilty on charges of disobeying a stop sign. Fines and costs, \$30.

Terry Lark pled guilty to charges of speeding. Fines and costs, \$40.

David Pletcher pled guilty to charges of disobeying a stop light. Fines and costs, \$25.

Ralph Stewart failed to appear in court on charge of hunting before 10 a.m. A bench warrant was issued for his arrest.

William A. Cobb pled guilty to charges of disobeying a red signal. Fines and costs, \$20.

Torrance Marsh was found guilty on charges of disorderly conduct. Fines and costs, \$25.

Jimmie Collinsworth was found guilty on charges of disorderly conduct. Fines and costs, \$25.

Eugene Bartley pled guilty to charges of no operator's license on his person. Fines and costs, \$12.

Leta Schiel pled guilty to charges of disobeying a red signal. Fines and costs, \$25.

John Schaeffer pled guilty to charges of possession of open intoxicants. Fines and costs, \$50.

Robert Wagaman was sentenced to pay fines and costs of \$250, and to the Alcohol Safety Action Program on charges of impaired driving.

Duane Strieter was sentenced to pay fines and costs of \$350, to 30 days in jail, and to the Alcohol Safety Action Program on charges of driving under the influence of liquor and no operator's license on his person.

Duane Strieter was sentenced to pay costs of \$150 and to one year probation on charges of use of marijuana.

Jimmy Watkins was sentenced to pay fines and costs of \$450, to the Alcohol Safety Action Program, to 1 year probation, and to 30 days in jail on charges of impaired driving.

Irene Baisch pled guilty to charges of no registration on her person. The case was dismissed on costs of \$10.

Susan Malinczak was sentenced to pay fines and costs of \$350 on charges of committing larceny of property valued under \$100 and impaired driving.

James Monroe pled guilty to reduced charges of impaired driving. He was referred to probation, to the Alcohol Safety Action Program, and will be sentenced Jan. 27.

Alonzo Feltner was found guilty on charges of driving under the influence of liquor. He will be sentenced Jan. 25.

Larry McFall pled guilty to charges of disobeying a stop sign. Fines and costs, \$25.

Donald Johnson pled guilty to charges of failing to stop in an assured and clear distance. Fines and costs, \$50.

Lowell Walker pled guilty to charges of defective equipment and failure to change his address on his operator's license. Fines and costs, \$30, and two years probation concurrent with probation on other charges.

Lowell Walker pled guilty to charges of creating unnecessary noise, speeding, illegal white rear tail-light, and defective tail-lights. Fines and costs, \$192 and two years probation concurrent with probation on other charges.

Clement Arnett pled guilty to charges of drunk and disorderly. Fines and costs, \$50.

Douglas Ison pled guilty to charges of possession of open intoxicants. Fines and costs, \$35.

Jimmy Collinsworth pled guilty to charges of open intoxicants. He will be sentenced Dec. 14.

Guy Manwaring pled guilty to charges of use of marijuana. He will be sentenced Jan. 31.

Gary Marriott was found guilty on charges of drunk and disorderly. Fines and costs, \$50.

William Houck pled guilty to charges of drunk and disorderly. Fines and costs, \$50.

Lonnie Brasher pled guilty to charges of failing to stop in a clear and assured distance. Fines and costs, \$25.

Vincent Hafner pled guilty to charges of driving under the influence of liquor. He will be sentenced April 4.

Timothy Johnson pled guilty to charges of possession of open intoxicants. Fines and costs, \$35.

David Richardson pled guilty to possession of open intoxicants. Fines and costs, \$35.

Mark Brennan pled guilty to charges of making an illegal turn. Fines and costs, \$22.

Michael Lindemann pled guilty to charges of speeding. Fines and costs, \$71.

William Becker pled guilty to charges of speeding. Fines and costs, \$32.



BALLOONS, KIDDIE CARTOONS, refreshments, and of course, a visit with Santa, were all part of the excitement shared by guests at the annual Dana Corp. Christmas Party for plant employees and their guests last Saturday. While the knees of Santa's trousers were threadbare by the end of the afternoon, children were nevertheless pleased to have confided their Christmas gift

requests to Santa in person. Three of those youngsters caught in the act are from left, John LaGore, 4; Nancy LaGore, 3; and Terri LaGore, 7. Peering from beneath his bushy brows and beard is the ever familiar face of Mr. Claus. Parents of the three children are Mr. and Mrs. Robert LaGore of Tecumseh.

Three Stolen Vehicles Recovered in 24 Hours

Within a 24-hour period, this week-end, the Chelsea Police Department recovered two vehicles which had been stolen by thieves in the Chelsea area, and a van which had been stolen in Detroit and was abandoned locally.

According to police reports, officers responded to a call from Joe Merkel, owner of Wolverine Bar, at about 4:20 a.m. Saturday. Merkel reported his 1976 copper-colored Econoline van, which had been leased from Palmer Motor Sales, was missing from the Wolverine Bar parking lot. Merkel stated he had parked the vehicle in the northeast corner of his lot at 2 p.m. Friday.

Upon investigation, officers found a similar looking van parked in the approximate area where the Merkel van had been deposited. A Law Enforcement Information Network (LEIN) check on the remaining vehicle revealed it too had been stolen.

According to Merkel, very little gas was in his leased vehicle, and it had been locked when stolen. The van, which was valued at \$5,000, contained personal property valued at \$530. On Monday, Dec. 13, Chelsea Police received a call from the Livonia Police Department stating they had discovered the van in their area. Chelsea Police then notified Merkel of the recovery.

In the meantime, local officers notified Detroit police of their recovery of the similar van which they assume was stolen by the same party responsible for the Merkel theft.

At about 6 a.m. Sunday, Dec. 12, Chelsea Police were notified of a missing 1967 two-door Valiant, valued at \$300 and registered to Arlis Frederick of Sycamore St. Frederick stated he last noticed the car in his driveway at 6 p.m. Saturday.

While he had left the car unlocked, Frederick reported, he had removed the keys. The vehicle contained a quarter-tank of gas.

Chelsea police relayed the information on the suspected theft to the Washtenaw County Sheriff's

Department and entered an area broadcast on LEIN.

At about 6 p.m. Sunday, Washtenaw County Sheriff's deputies contacted local officers to state they had received a call from the Wallbridge, O. State Police Post acknowledging recovery of the stolen car. Ohio State Police had found the Valiant abandoned on I-75 about seven miles south of Toledo. The car had been hot-wired.

Chelsea Police notified Frederick who arranged for personal recovery of the vehicle.

JC Auxiliary Hosts 200 Children for Lunch With Santa

More than 200 children in Chelsea attended Lunch With Santa last Saturday, Dec. 11, at the VFW Hall. While they ate, the youngsters visited with Santa and described their Christmas expectations.

The event was sponsored by the Chelsea Jaycee Auxiliary, who to continue Lunch With Santa on an annual basis.

In addition to sharing his noon-day meal with area children Saturday, Santa collected the contents of his mailbox which had been filled to capacity with letters from anxious children awaiting Christmas Eve. As promised, each letter will be answered personally.

Residential - Commercial REMODELING

FREE ESTIMATES

Ib V. JENSEN and SON

LICENSED BUILDER

378 Spring Lake Drive
Chelsea, Mich.
PHONE 475-1820

GAMBLES

110 N. MAIN ST.

PH. 475-7477

PAINT CLOSE-OUT 50% Off

Complete line all Gambles Brand INTERIOR HOUSE PAINT

Check These Prices:

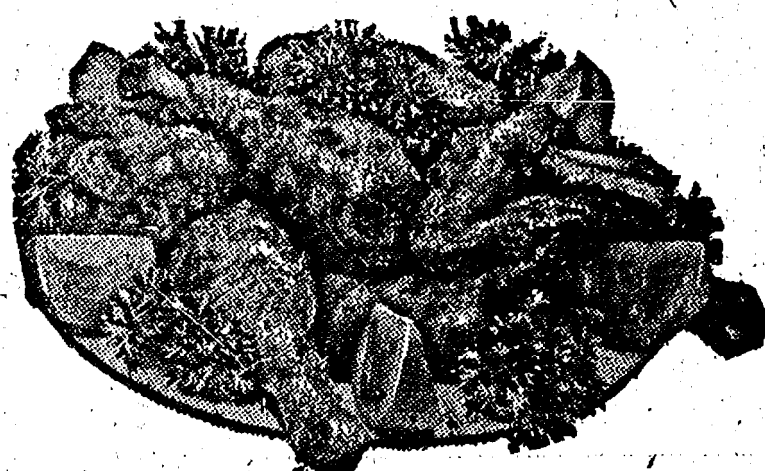
INTERIOR LATEX WALL PAINT Reg. \$7.99 gal. NOW **\$3.98**

DELUXE GRADE WALL PAINT Reg. \$9.99 gal. NOW **\$4.98**

All Paint Must Go Before Year-End!

DECORATE NOW FOR THE HOLIDAYS & SAVE!

CHICKEN is still SPECIAL on TUESDAY NIGHTS at the CAPTAINS TABLE



All you can eat of Deep-fried Chicken, French Fries, Biscuits and Honey, plus a trip to our delicious Salad Bar.

\$2.95

The Captains Table

8093 Main St., Dexter 426-3811

Mon.-Wed. 6 a.m.-9 p.m.
Thurs., Fri., 6 a.m.-10 p.m.
Saturday, 7 a.m.-9 p.m.

NOW SERVING EACH SATURDAY EVENING Spaghetti and Meat Ball Dinners Includes Salad and Roll

CASH BACK \$50

Direct Rebate to you from RCA

NOW! Get \$50.00 Cash Back direct from the RCA Distributing Corporation - Taylor, Michigan! Purchase an RCA model GA744 or GA748 pictured and your participating RCA dealer will provide you with a form to mail direct to:

RCA Upon receipt (allow 10 days) RCA Distributing Corporation will mail you a check for \$50.00! Do it today! Here's your chance for a real value and Cash Back to boot!



YOUR CHOICE **\$659**

THE SEVILLE / Mediterranean Styling
RCA's Super AccuColor black matrix picture tube produces sparkling bright, dramatically detailed pictures. Handsome Candle glow pine-grain finish. Push-button AccuMatic IV (ACM) automatically brings color, tint, brightness, and contrast within a normal preset range with a single control. Push-button Automatic Fine Tuning (AFT) pinpoints and holds the correct broadcast signal on each channel. Lighted channel indicators for easy read-out. Plug-in RCA AccuCircuit modules simplify servicing. Beautiful Antiqued Valencia pecan-grain finish.

THE CUMBERLAND / Country Styling
RCA's Super AccuColor black matrix picture tube produces sparkling bright, dramatically detailed pictures. Handsome Candle glow pine-grain finish. Push-button AccuMatic IV (ACM) automatically brings color, tint, brightness, and contrast within a normal preset range with a single control. Push-button Automatic Fine Tuning (AFT) pinpoints and holds the correct broadcast signal on each channel. Lighted channel indicators for easy read-out. Plug-in RCA AccuCircuit modules simplify servicing.

100% SOLID STATE RCA XL-100



for RCA COLOR TV

Gambles
110 N. Main St., Chelsea Ph. 475-7472

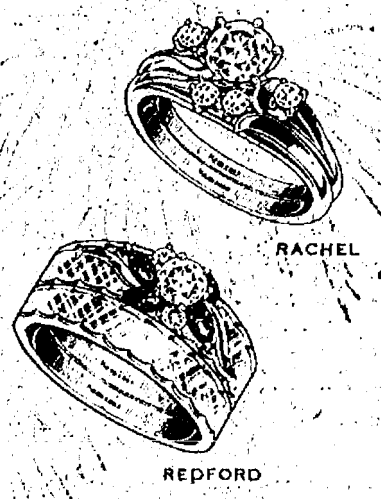


Only **9 days left** to shop for your Christmas diamond



Brilliant perfection in a Keepsake diamond to wear this Christmas and forever. Your love is reflected in its perfect clarity, precise cut and fine white color. With the famous Keepsake guarantee.

Keepsake
Registered Diamond Rings



WINANS JEWELRY

DAVIDSON STATION

BEER BATTER FISH FRY

Every Friday Night 5 p.m. to 9 p.m.

A friendly family tavern since Jan. 7, 1871.

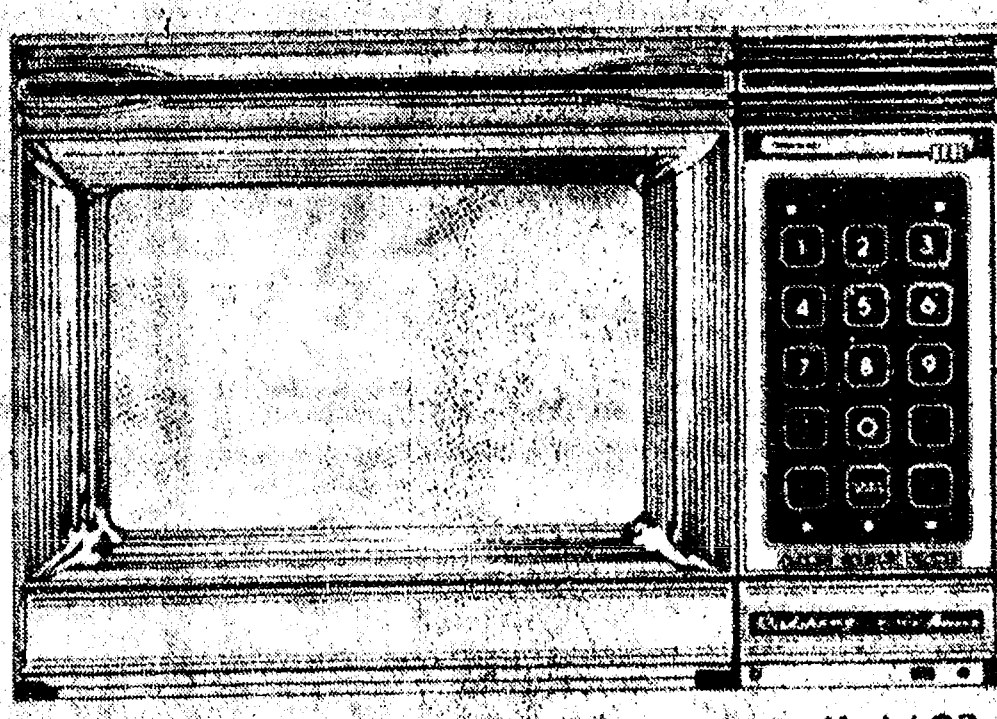
113 S. MAIN CHELSEA

Standard Want Ads Will Find A Buyer for You!

Amana Radarange HOLIDAY SALE

The microwave oven no other microwave oven can touch...

the **Amana** Touchmatic Radarange MICROWAVE OVEN with COOKMATIC POWER SHIFT



The first microwave oven with a memory. Makes microwave cooking as easy as 1-2-3!

SPECIAL SAVINGS ON ALL RANGES

- Plus -

FREE 10" BROWNING SKILLET and COOKING GRILL

HEYDLAUFF'S

113 N. Main St., Chelsea

Phone 475-1221

GRAND OPENING



Polly's MASTER MARKETS
1101 M-52
CHELSEA, MICH.
(Corner M-52 and Old U.S. 12)

FOR CHRISTMAS

Fantastic SAVINGS ARE IN STORE FOR YOU AS WE INTRODUCE YOU TO OUR NEWEST ADDITION....

3001 E. MICHIGAN

(NEXT TO K-MART)

POLLY'S HAMBURG or HOT DOG BUNS
SAVE 29¢
3 8-CT PKGS. 99¢

NOTICE: ALL POLLY'S STORES WILL CLOSE AT 9 P.M. SATURDAY, DEC. 18, SO THAT OUR EMPLOYEES MAY ATTEND OUR CHRISTMAS PARTY.

PARKAY MARGARINE
BUY 3 SAVE 47¢ w/ COUPON
39¢
1-LB. QTRS

Sealtest 1/2% LO-FAT MILK

BUY 2 SAVE 80¢ w/ COUPON
SEALTEST 1/2% LO-FAT MILK GALLON **89¢**

POWDERED or BROWN SUGAR
SAVE 40¢ w/ COUPON
4 1-LB. BAGS \$1

SEALTEST DIPS
BUY 3 SAVE 84¢ w/ COUPON
29¢
8-OZ. WT.

SAVE 64¢
PEPSI
8-PAK 16-OZ. NO-RETURNS **\$1.29**
• MOUNTAIN DEW
• PEPSI LIGHT
• DIET PEPSI

HILLS BROS COFFEE
SAVE 40¢ w/ COUPON
\$3.99
2-LB. CAN

FREE!

\$1000

WORTH OF GROCERIES

Grand Prize: **\$500.00** WORTH OF GROCERIES (1 WINNER)
1st Prize: **\$100.00** WORTH OF GROCERIES (3 WINNERS)
2nd Prize: **\$50.00** WORTH OF GROCERIES (4 WINNERS)

2ND BIG WEEK OF SAVINGS

20% OFF

ANY DRY CLEANING WHEN PRESENTED WITH IN-STORE COUPON

SAVE OVER \$11

WITH POLLY'S BONUS and IN-STORE COUPONS

VALUABLE COUPON
SAVE 40¢
HILLS BROS COFFEE
2-LB. CAN **\$3.99**
LIMIT 1 PER COUPON PER FAMILY GOOD THRU 12/18/76

VALUABLE COUPON
SAVE 40¢
Scot Kitchen BROWN or POWDER SUGAR
16-OZ. BAGS **\$1**
LIMIT 4 PER COUPON PER FAMILY GOOD THRU 12/18/76

VALUABLE COUPON
SAVE 70¢
Bugs Bunny VITAMINS
60 ct. **\$1.49**
LIMIT 1 PER COUPON PER FAMILY GOOD THRU 12/18/76

VALUABLE COUPON
SAVE \$1.00
Rossmilk SKIN CREAM
12-OZ. WT. **\$1.29**
LIMIT 1 PER COUPON PER FAMILY GOOD THRU 12/18/76

VALUABLE COUPON
SAVE UP TO 80¢
Sealtest 1/2% LO-FAT MILK
GALLON **89¢**
LIMIT 2 PER COUPON PER FAMILY GOOD THRU 12/18/76

VALUABLE COUPON
SAVE UP TO 47¢
Parkay MARGARINE
1-LB. QTRS **39¢**
LIMIT 3 PER COUPON PER FAMILY GOOD THRU 12/18/76

VALUABLE COUPON
SAVE UP TO 84¢
Sealtest CHIP DIP
8-OZ. WT. **29¢**
LIMIT 3 PER COUPON PER FAMILY GOOD THRU 12/18/76



Manhattan Broil
A thick boneless steak
from the top round
broiling tender.

Savory Beef
From the chuck,
always delicious,
now always tender.

Swift's
Premium

POLLY PRIDE CHOICE

**ROUND
STEAK**

LB. **\$1.09**

**Polly's
and
Swift
Premium
Choice...**

POLLY PRIDE CHOICE

PORTERHOUSE STEAK LB. **\$1.79**

POLLY PRIDE CHOICE

SIRLOIN TIP STEAK LB. **\$1.69**

POLLY PRIDE CHOICE

CUBE STEAK LB. **\$1.59**

POLLY PRIDE CHOICE BONELESS

RUMP ROAST LB. **\$1.39**

POLLY PRIDE CHOICE

CHUCK STEAK LB. **79¢**

POLLY PRIDE ARM-CUT

SWISS STEAK LB. **\$1.09**

POLLY PRIDE CHOICE

SIRLOIN STEAK LB. **\$1.39**

POLLY PRIDE QUALITY

MIXED PORK CHOPS LB. **\$1.09**

POLLY PRIDE QUALITY

RIB PORK CHOPS LB. **\$1.39**

POLLY PRIDE QUALITY

LOIN PORK CHOPS LB. **\$1.49**

NEW YORK BRAND

CORN BEEF LB. **79¢**

ECKRICH REGULAR or

BEEF FRANKS LB. **99¢**

ECKRICH REGULAR or THICK

SLICED BOLOGNA LB. **\$1.39**

ECKRICH

SMORGAS PAC LB. **\$1.49**

ECKRICH BAR-B-Q or

HONEY LOAF 8-OZ. WT. **99¢**

POLLY PRIDE BEEF

GROUND CHUCK 3 LBS. or MORE LB. **89¢**

Save
over
\$6

WITH POLLY'S
IN-STORE COUPONS

Free

Beef
or
Regular

OFFER
GOOD AT
POLLY'S
3001 EAST
MICHIGAN
ONLY!

1-LB. PACKAGE OF
**HYGRADE
FRANKS**

w/ coupon AND \$10 PURCHASE

VALUABLE COUPON

GOOD AT 3001
E. MICHIGAN
POLLY'S ONLY!!

Free 1-LB. PKG.
HYGRADE
FRANKS

W/ \$10⁰⁰
PURCHASE
LIMIT 1 PER COUPON PER FAMILY
EXPIRES 12/18/76

Polly's

Check
Your Needs

SAVE 25¢ W/IN-STORE COUPON	ROYAL PUDDINGS..... 4 4-OZ. WT. 59¢
SAVE 20¢ W/IN-STORE COUPON	ST. REGIS 9-INCH PAPER PLATES..... 100 CT. 69¢
SAVE 50¢ W/IN-STORE COUPON	PINE MOUNTAIN COLOR LOGS..... 3 CT. \$2.29
SAVE 28¢ W/IN-STORE COUPON	POLYSAK HEAVY DUTY TRASH BAGS..... 10 CT. 69¢
SAVE 14¢ W/IN-STORE COUPON	KLEENEX BOUTIQUE TOILET TISSUE..... 4-ROLL PAK 69¢
SAVE 47¢ W/IN-STORE COUPON	PILLSBURY PIE CRUST MIX.... 3 11-OZ. WT. \$1
BUY 2 SAVE 24¢	GENERAL MILLS CHEERIOS..... 7-OZ. WT. 39¢
SAVE 20¢ W/IN-STORE COUPON	RED STAR YEAST..... 5 for \$1
SAVE 24¢ W/IN-STORE COUPON	FLICKER RAZOR..... \$1.29
BUY 2 SAVE 60¢	CAINS POTATO CHIPS..... 16-OZ. WT. 99¢
SAVE 30¢ W/IN-STORE COUPON	THRIFTY ROASTED PEANUTS..... 2-LB. WT. \$1.39
SAVE \$1.00 W/IN-STORE COUPON	POLLY PRIDE HAMBURG..... 10-LB. BAG \$6.00
BUY 2 SAVE 80¢	FARMER PEET SLICED LUNCH MEAT..... 1-LB. WT. 99¢
BUY 2 SAVE 40¢	SWIFT PREMIUM SAUSAGE BROWN n' SERVE..... 89¢
BUY 2 SAVE 60¢	SCOT PRIDE SLICED BACON..... 1-LB. PKG. 69¢

BUY 2
SAVE 60¢
W/IN-STORE
COUPON

CAINS

**POTATO
CHIPS** 16-OZ. WT. **99¢**

ST. REGIS 9-INCH

**PAPER
PLATES** 100-CT. **69¢**

SAVE
20¢
W/IN-STORE
COUPON

SAVE
50¢
W/IN-STORE
COUPON

PINE MOUNTAIN

**COLOR
LOGS** 3-PKG **\$2.29**

POLY-SAK HEAVY DUTY

**TRASH
BAGS** 10-CT. **69¢**

SAVE
28¢
W/IN-STORE
COUPON

SCOT FARM
**BUTTERMILK
BISCUITS** 6 8-OZ. WT. **49¢**

DURKEES
BUCKET CHERRIES..... 10-OZ. WT. **49¢**
HEINZ
CATSUP..... 20-OZ. WT. **59¢**
SCOT LAD HEAVY DUTY
ALUMINUM FOIL..... 25-Ft. **59¢**
BAKERS
BAKING CHIPS..... 12-OZ. WT. **59¢**

HUNGRY JACK
**INSTANT
POTATOES** 32-OZ. WT. **99¢**

SCOT LAD
MARSHMALLOWS... 3 10-OZ. WT. **\$1**
VLASIC
KOSHER DILLS..... 46-OZ. WT. **99¢**
VLASIC
POLISH DILLS..... 46-OZ. WT. **99¢**
VLASIC
SWEET PICKLES..... 16-OZ. WT. **79¢**

SCOT LAD
**CRANBERRY
SAUCE** 3 16-OZ. WT. **\$1**

BLUE SEA CHUNK LIGHT
TUNA..... 2 6-OZ. WT. **89¢**
CREATIVE CRUST
PIZZA CRUSTS..... 2-PKG **85¢**
BAYS
ENGLISH MUFFINS..... 6-OZ. **39¢**
POLLYS
DUTCH APPLE PIE..... 8-IN. **99¢**

CORNED
BEEF 12-OZ. WT. **99¢**

RED
SALMON 15½-OZ. WT. **\$1.79**

PARTY TIME
**DRINK
MIXES** 8-CT. PKG. **99¢**

SMUCKERS
APRICOT PRESERVES..... 18-OZ. WT. **89¢**
QUEEN OF SCOT
STUFFED OLIVES..... 5-OZ. WT. **69¢**
QUEEN OF SCOT
PLAIN OLIVES..... 7-OZ. WT. **59¢**
QUEEN OF SCOT EXTRA LARGE
PITTED OLIVES..... 16-OZ. WT. **49¢**

QUEEN OF SCOT
FRUIT COCKTAIL..... 2 29-OZ. WT. **\$1**
SCOT LAD
SLICED PEACHES..... 2 29-OZ. WT. **\$1**
SCOT LAD
PEARS..... 2 29-OZ. WT. **\$1**
ALPO
BEEF CHUNKS..... 14-OZ. WT. **29¢**

WEIGHT WATCHERS
MARGARINE..... 1-LB. WT. **49¢**
WEIGHT WATCHERS
AMERICAN SINGLES..... 10-OZ. WT. **99¢**
PILLSBURY
BREAD MIXES..... 16-OZ. WT. **79¢**
SCOT LAD
APPLE SAUCE..... 50-OZ. WT. **79¢**

SMUCKERS
**STRAWBERRY
PRESERVES** 18-OZ. WT. **89¢**

SCOT LAD
**SALAD
DRESSING** 32-OZ. **59¢**

APPANWAY
**PIZZA
MIX** 12-OZ. WT. **39¢**

SALADA
TEA BAGS..... 100 CT. **\$1.49**
SALADA 4-MINUTE
FUDGE..... 10-OZ. WT. **89¢**
RINSO
DETERGENT..... 49-OZ. WT. **99¢**
PETER PAUL MILK CHOCOLATE
MOUNDS..... 6 **for 79¢**

CHUMWIE
DRY DOG FOOD..... 25 LB. **\$3.49**
BROADCAST
CORN BEEF HASH..... 15-OZ. **69¢**
ARMOUR
VIENNA SAUSAGE..... 3 5-OZ. WT. **\$1**
ARMOUR
POTTED MEAT..... 3 5-OZ. WT. **\$1**

HIGHLAND MEADOW
JUMBO TOWELS..... 49¢
HIGHLAND MEADOW
NAPKINS..... 250 CT. **69¢**
CONTADINA
PIZZA SAUCE..... 15-OZ. WT. **59¢**
SCOT BAKERY
COOKIES..... 16-OZ. WT. **99¢**

PRE-STONE
ANTI-FREEZE GAI **\$3.79**

POLLYS
**FRENCH
BREAD** 1-LB. WT. **49¢**

POLLYS
**CAKE
DONUTS** DOZ **89¢**

The Two Most TRUSTED Names In Meat

POLLY PRIDE ENGLISH CUT POT ROAST	LB.	\$1.09
POLLY PRIDE BONELESS BEEF STEW	LB.	\$1.09
POLLY PRIDE CHOICE BEEF SHORT RIBS	LB.	79¢
POLLY PRIDE CHOICE RIB STEAK	LB.	\$1.58
POLLY PRIDE CHOICE CLUB STEAK	LB.	\$1.88
POLLY PRIDE CHOICE 4TH/7TH RIB ROAST	LB.	\$1.49

POLLY PRIDE CHOICE

T-BONE STEAK

\$1.69

LB.

POLLY PRIDE CHOICE BEEF "BONELESS"

CHUCK ROAST

LB. **89¢**

ERRUD MOKEY	10-OZ. PKG.	99¢	HYGRADE CHUNK COOKED SALAMI	LB.	79¢	GOVT INSPECTED WHOLE CHICKEN LEGS	LB.	69¢
ERRUD SLICED LOGNA	LB. PKG.	89¢	HYGRADE SMOKED PORK CHOPS	LB.	\$1.59	GOVT INSPECTED CHICKEN THIGHS	LB.	75¢
HYGRADE HUNK RAUNSWEIGER	LB.	69¢	HYGRADE REGULAR or BEEF FRANKS	LB.	59¢	GOVT INSPECTED CHICKEN DRUMSTICKS	LB.	79¢

SWIFT PREMIUM

HAM

\$6.99

5-LB. CAN

SCOT PRIDE SLICED

BACON

79¢

1-LB. PKG.

W/IN-STORE COUPON

POLLY PRIDE QUALITY

HAMBURG

\$6.90

10-LB. BAG

W/IN-STORE COUPON

APPIAN WAY pizza

NEEDS NO RISING TIME

12-OZ. PKG. **39¢**

APPIAN WAY PIZZA MIX

MIX or MATCH **SALE**

4 CANS FOR **\$1**

- 12-OZ. GOLDEN NIBLETS CORN
- 17-OZ. TENDER SWEET PEAS
- 16-OZ. FRENCH GREEN BEANS
- 16-OZ. KITCHEN SLICED GREEN BEANS

SAVE 14¢ BATHROOM TISSUE	4-ROLL PAK 69¢	SAVE 20¢	RED STAR DRY YEAST	5 for \$1
SAVE 47¢ PIE CRUST MIX	3 11-OZ. WT. \$1	SAVE 25¢	ASSORTED ROYAL PUDDINGS	4 3-OZ. WT. 59¢

FRITOS
CORN CHIPS
 12-OZ. WT. **69¢** || FRITOS **TWIN-PAK RUFFLES** | 8 1/2-OZ. WT. **69¢** |

BUGS BUNNY
VITAMINS

REGULAR or IRON

60-CT. **\$1.49**

4 BRECK CLEAN RINSE

8 oz. **\$1.27** **\$1.59** Value

ROSE MILK
SKIN CREAM
 12-OZ. WT. **\$1.29** || FORA CLOSE SHAVE **FLICKER RAZOR** | EA. **\$1.29** |
BARBIE GIFT SETS Bath Collection, Bath Beads Beauty Set, Jewel Box, Fragrance Boutique	30 Tablets **\$1.18** **\$1.39** Value
PAPER MATE PEN & PENCIL GIFT SET	**\$2.79** **\$3.95** Value
Schick PLATINUM PLUS D.E. 93 SUPER CHROMIUM INJ. 4's	4 oz. Lotion **\$1.89** **\$2.29** Value
SELSUN BLUE Anti-Dandruff Shampoo	50 Tablets **\$2.61** **\$2.99** Value

OLD SPICE
AFTER SHAVE
 4.75 ounce **\$1.78** **\$2.25** Value || EVEREADY FLASHLIGHT BATTERIES | Size C & D **\$1.24** **\$1.59** Value |
| CEPACOL MOUTHWASH | 20c Off Label 20 oz. - **\$1.95** Value |
| BRUT GIFT SET | **\$2.95** |

MENNEN
SKIN BRACER GIFTS

GIFT CARTON **\$1.49**
6 oz. \$1.85 Value

COLLECTION SET **\$1.39**
2 - 1 1/2 oz. - \$1.75 Value

VICKS SINEX NASAL SPRAY **\$2.13** Value
1 oz. - \$2.70 Value

FORMULA 44-D COUGH MIXTURE **\$2.49** Value
6 oz. - \$3.10 Value

FORMULA 44 COUGH MIXTURE **\$2.47**
8 oz. - \$3.25 Value

VICKS DAY CARE **\$2.61** Value
10 oz. - \$3.25 Value

VICKS COUGH SYRUP **\$1.63** Value **\$1.29**
6 oz. - \$2.10 Value

LISTERMINT

25c Off Label
24 ounce
\$2.46 Value
\$1.72

40 Tablets **\$1.19** **\$1.49** Value

VASELINE
PETROLEUM JELLY

15 oz. **\$1.31** **\$1.59** Value

Q-TIPS Cotton Swabs

170 Swabs
\$1.39 Value
\$1.04

Polly's MASTER MARKETS

1101 M-52
CHELSEA, MICH.
(Corner M-52 and Old U.S. 12)

new
treet
new
easy open
can

12-OZ. CAN **89¢**

COCOA BUTTER

STONE

THE MOISTURIZING SOAP

2 BATH SIZE BARS **59¢**

GRAND OPENING



Polly's MASTER MARKETS

1101 M-52
CHELSEA, MICH.
(Corner M-52 and Old U.S. 12)

**PRODUCE AND
FROZEN FOOD**

SALE



SAVE
18'

SNAPPY CELLO

**RED
RADISHES**

3 \$1
1-LB. BAGS

**FLORIDA
WHITE
GRAPEFRUIT**

SAVE
30'

5-LB.
BAG

69¢

FLORIDA

SAVE
30'

5-LB. BAG

Tangelos 69¢

U.S. NO. 1
Michigan

**JONATHON
APPLES**

3-LB.
BAG

69¢

Mix or
Match!

SAVE
15'

**GREEN
PEPPERS
OR
CUCUMBERS**

3 for 49¢

THRIFTY

**ROASTED
PEANUTS**

2-LB.
BAG

\$1.39

SAVE
30'
w/ IN-STORE
COUPON

**Diamond
IN-SHELL**

SAVE
20'

walnuts

1-LB.
BAG

69¢

WITH
IN-STORE
COUPON

FOR A TOUCH OF CHRISTMAS

Poinsettias

6-INCH
POT

\$3.39

SAVE
60'

HYBRID
AMARYLLIS
BULBS
\$3.99

Christmas with a Gourmet Touch

FRUIT BASKETS

\$3.99
AND UP



SAVE
UP TO
40'

**morton
dinners**
44¢

11-OZ.
WT.

LIMIT 8 PLEASE

SAVE
20'

BORDEN

**LADY BORDEN
DELUXE QUARTS**

32-OZ.
WT.

79¢



SAVE
20'

BORDEN

**ICE CREAM
CAKE ROLL**

16-OZ.
WT.

79¢